



ad hoc²

 **swela**
Textile Evolution



AD HOC¹



142 CM

Breite
Width



Note 7

Lichtechtheit
Light fastness

ISO 105/B02



Note 7

Wetterechtheit
Weatherproof

ISO 105/B04



100% POLYESTER

Material
Material



Article 570 =
Article 575 =
Article 576 =

275 G/M²
275 G/M²
285 G/M²

Gewicht
Weight



35.000 T
50.000 T
50.000 T

Scheuerbeständigkeit
Martindale

DIN EN ISO 12947-2



Note 4-5
Note 4
Note 4

Pillingbeständigkeit
Pilling

DIN EN ISO 12945-2



CARE RECOMMENDATIONS



Das Muster dient zur Darstellung der Farbstellung.
Illustrations of color are to be regarded as approximate only.



swela
Textile Evolution



AD HOC³

57549

57578

57028

57648

57001

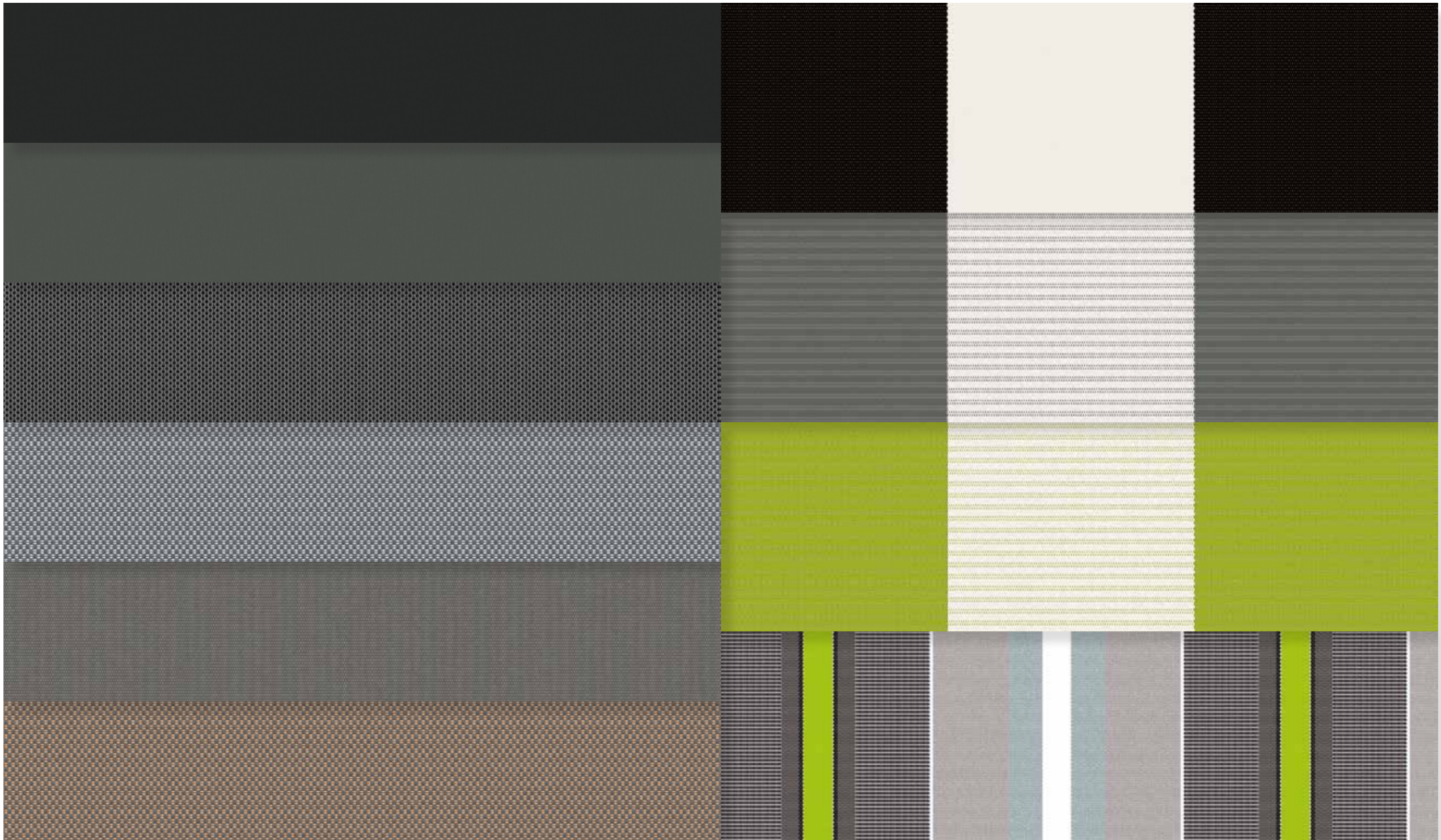
57647

56908

56938

56936

57128





57557

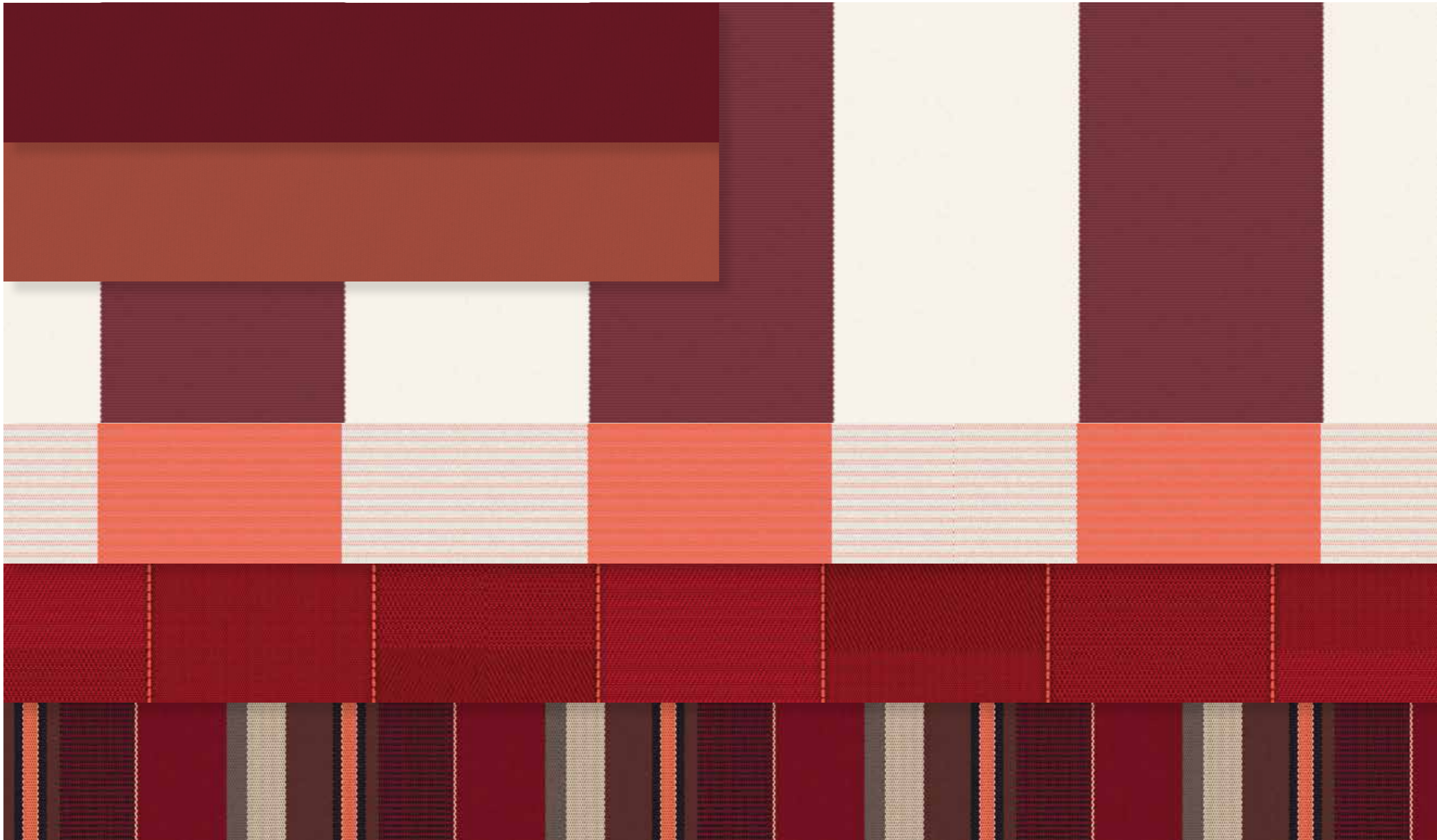
57573

56903

56933

56803

57113



57581

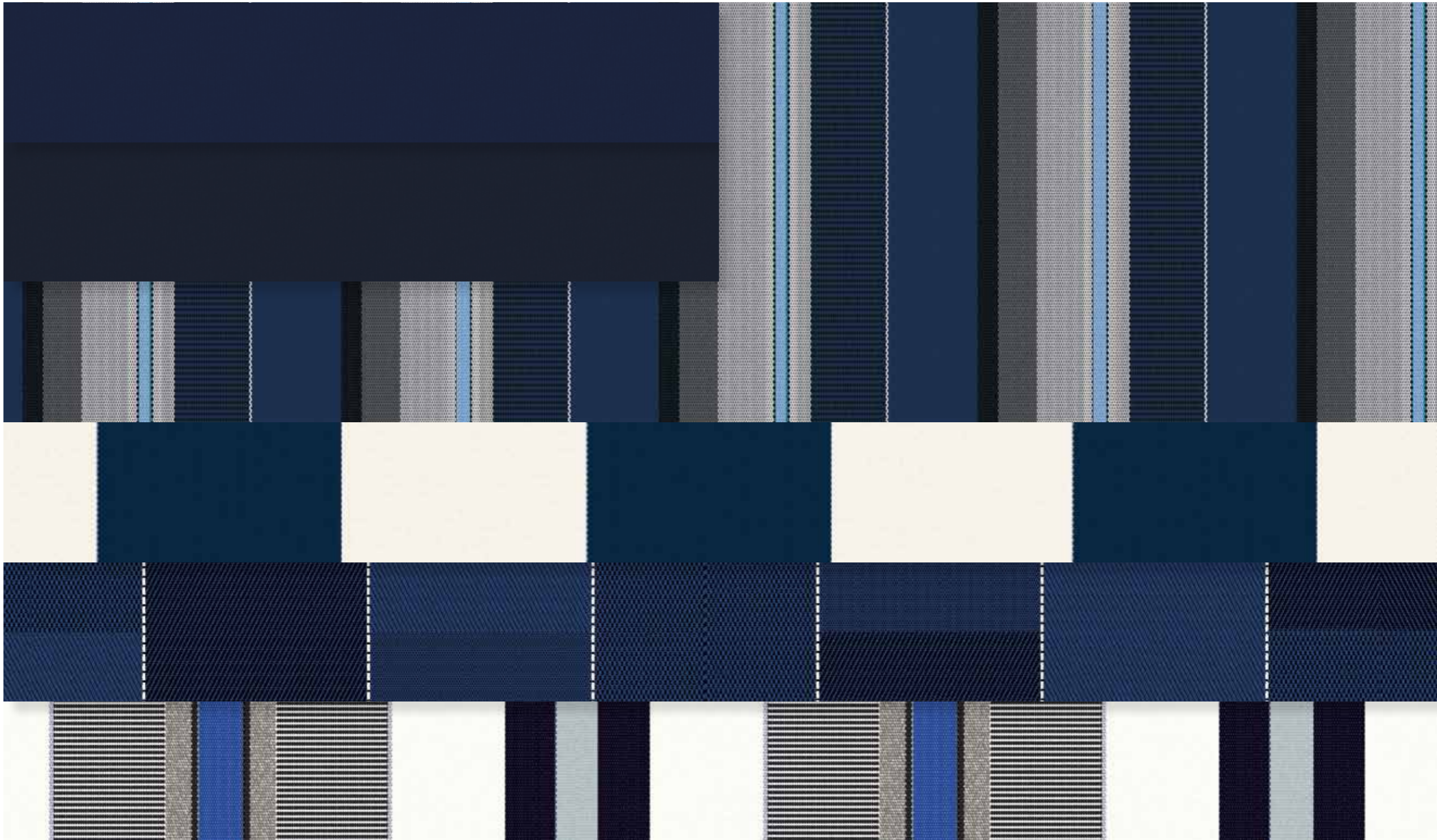
57595

57115

56905

56805

57125



57543						48103
57586						
57528						48108
57515						



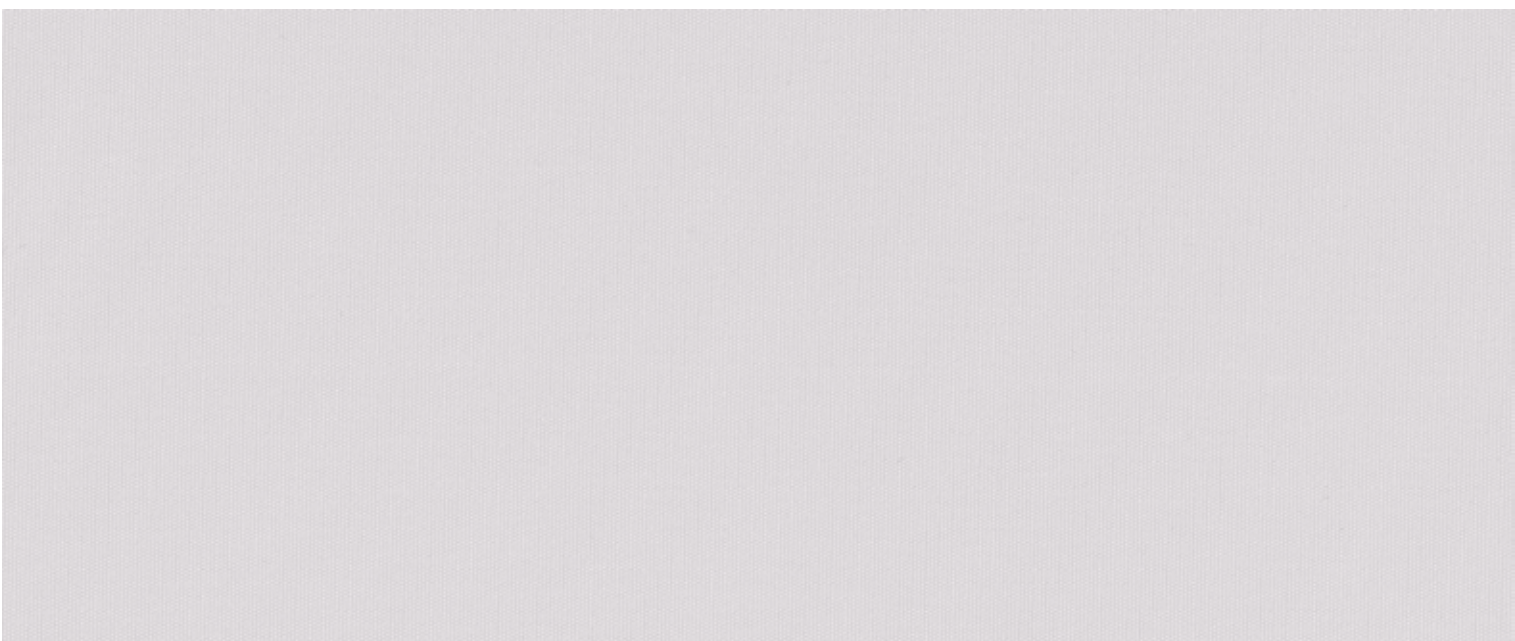
AD HOC¹



57651



57561



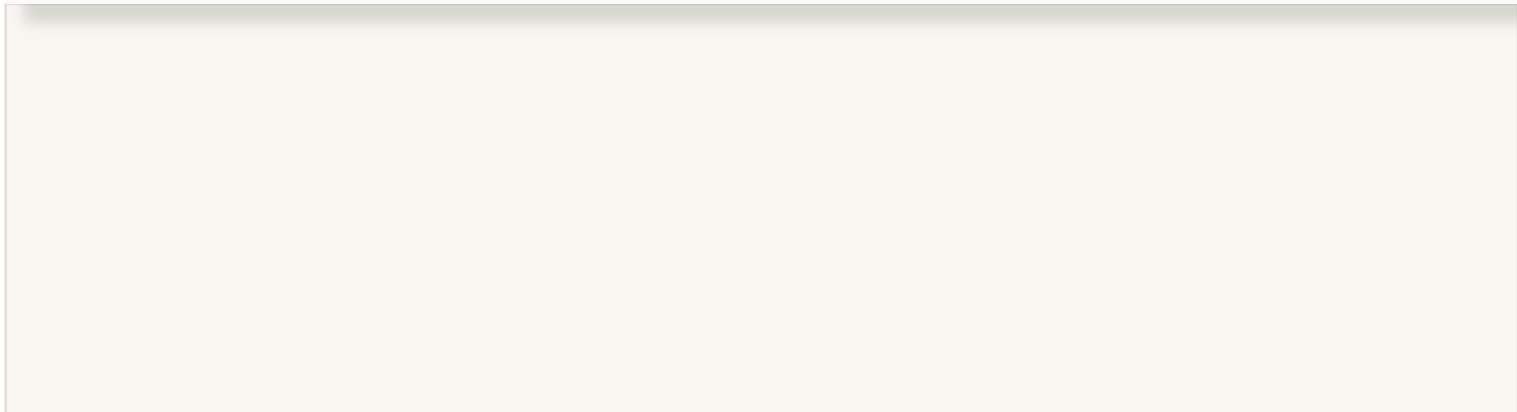
57531



AD HOC²



57561



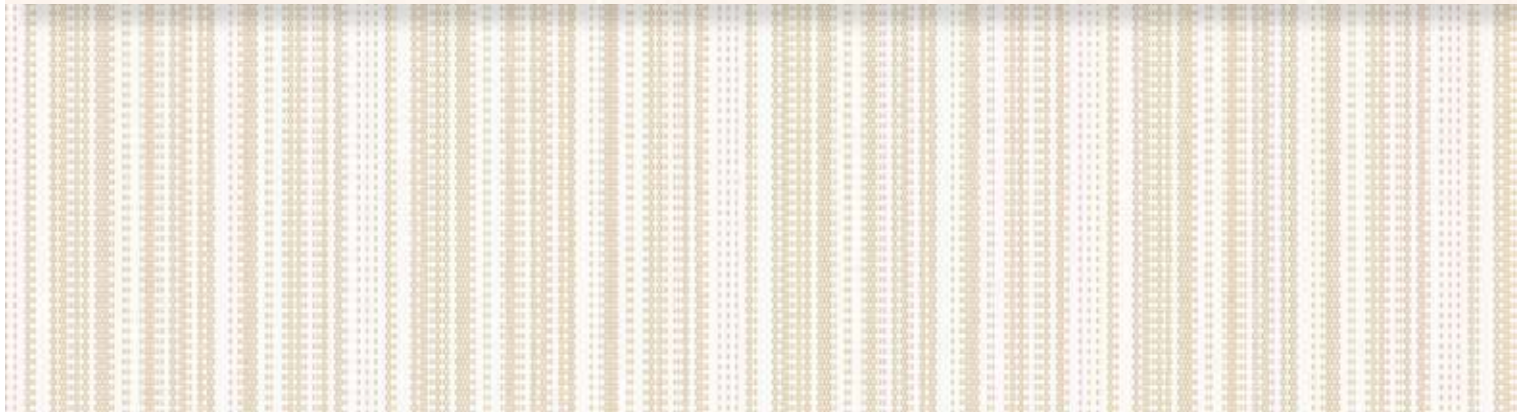
57537



57432



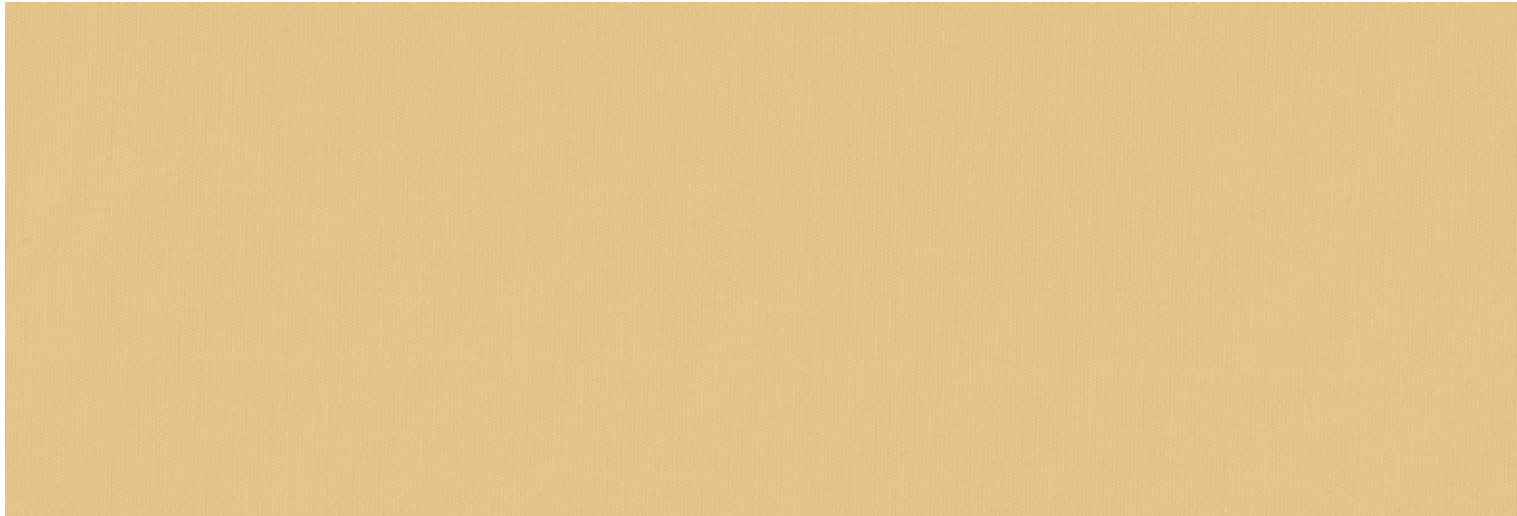
57801



57433



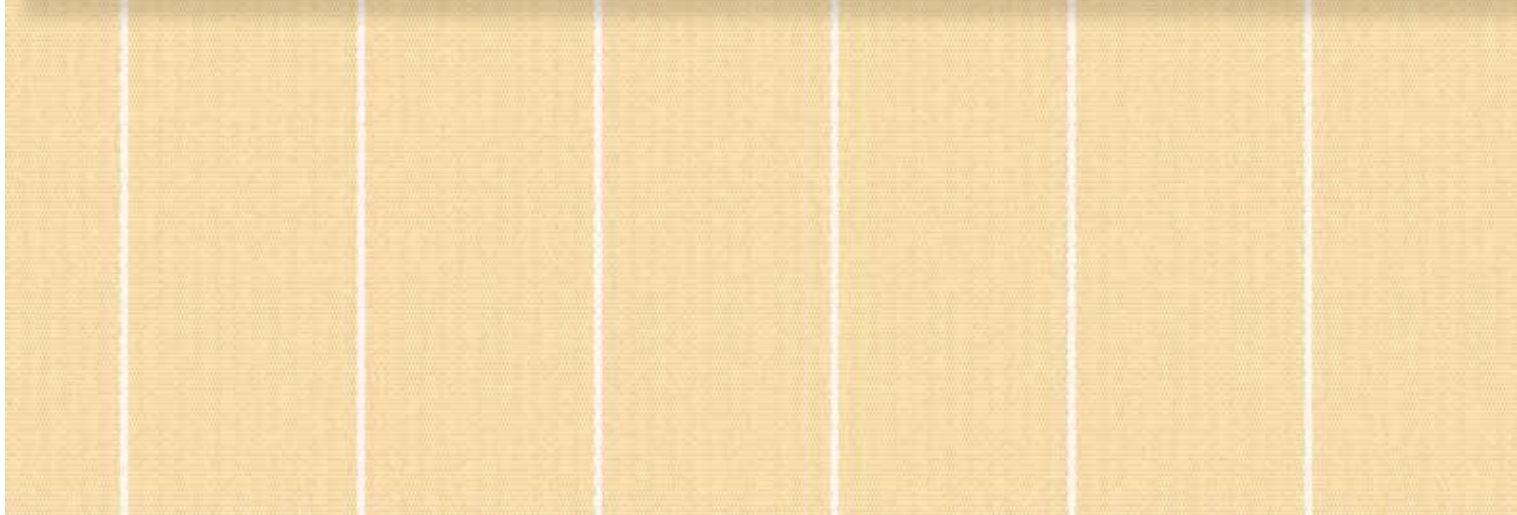
AD HOC²



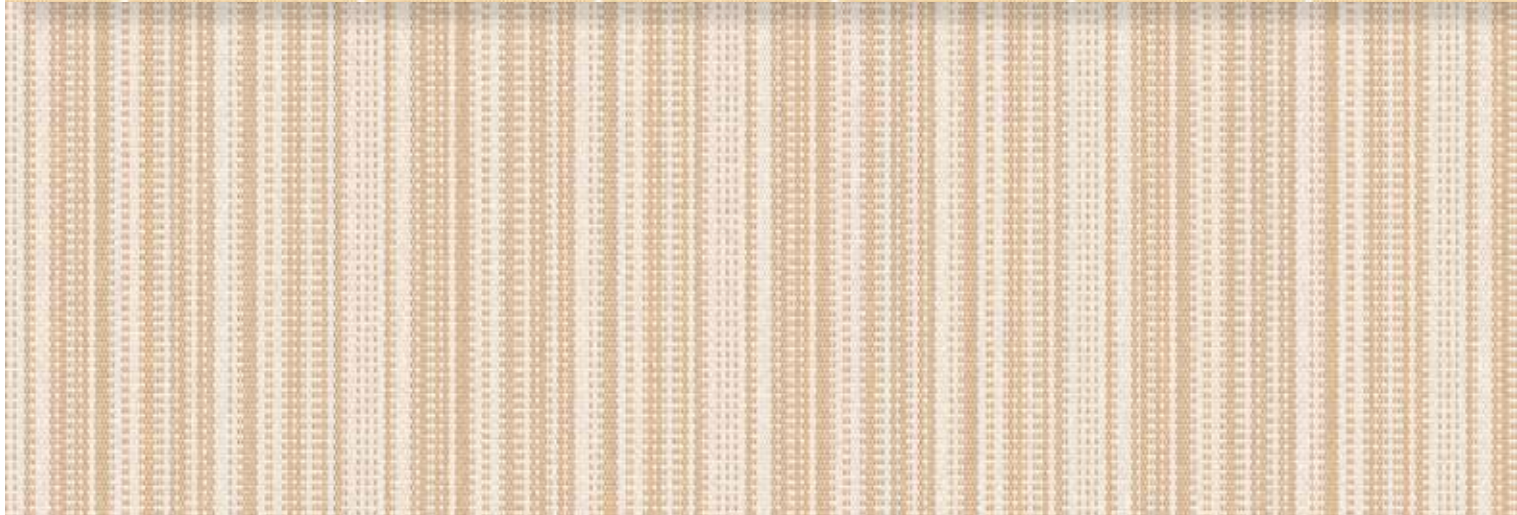
57571



57434



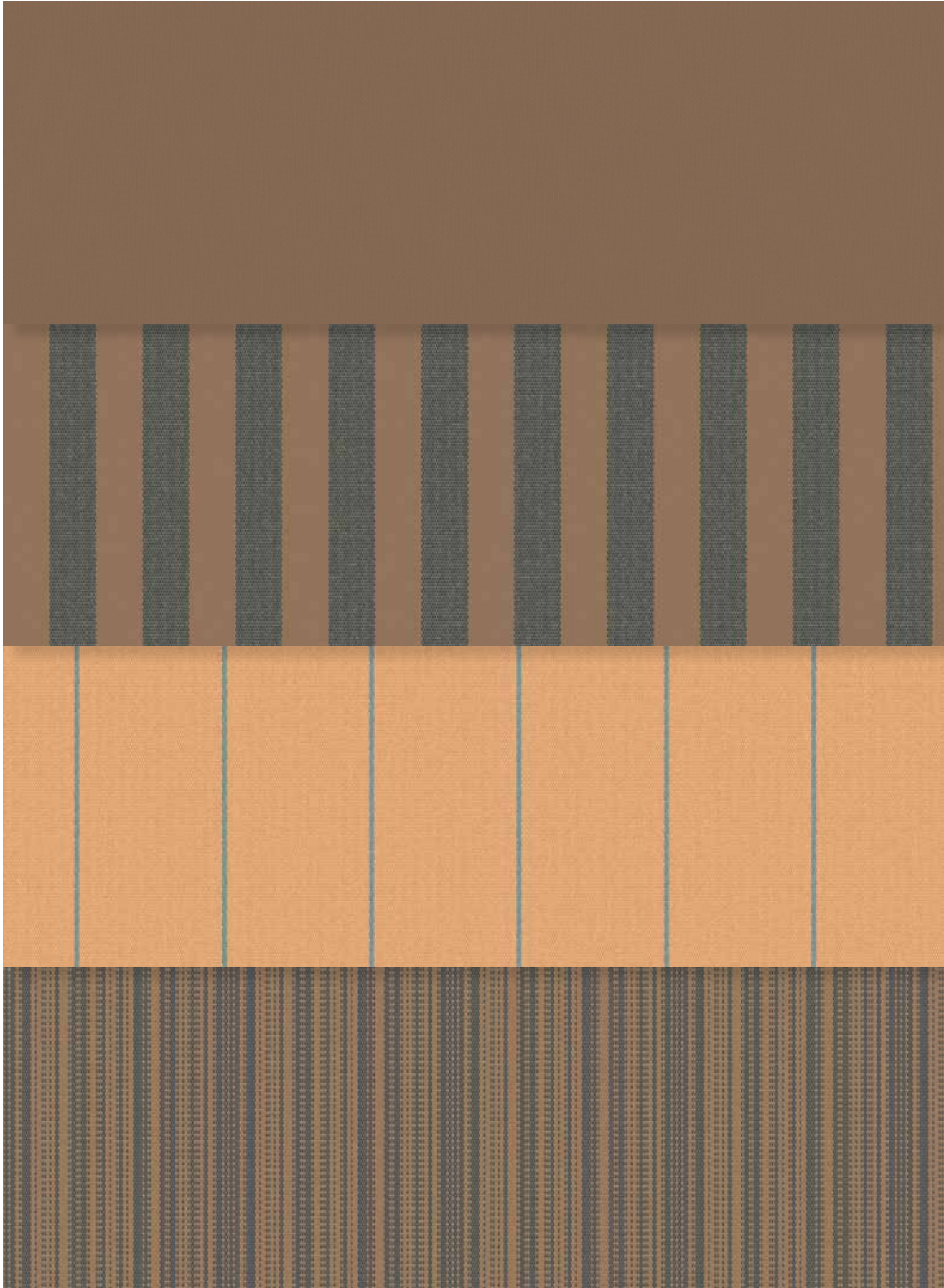
57841



57435



AD HOC²



57584

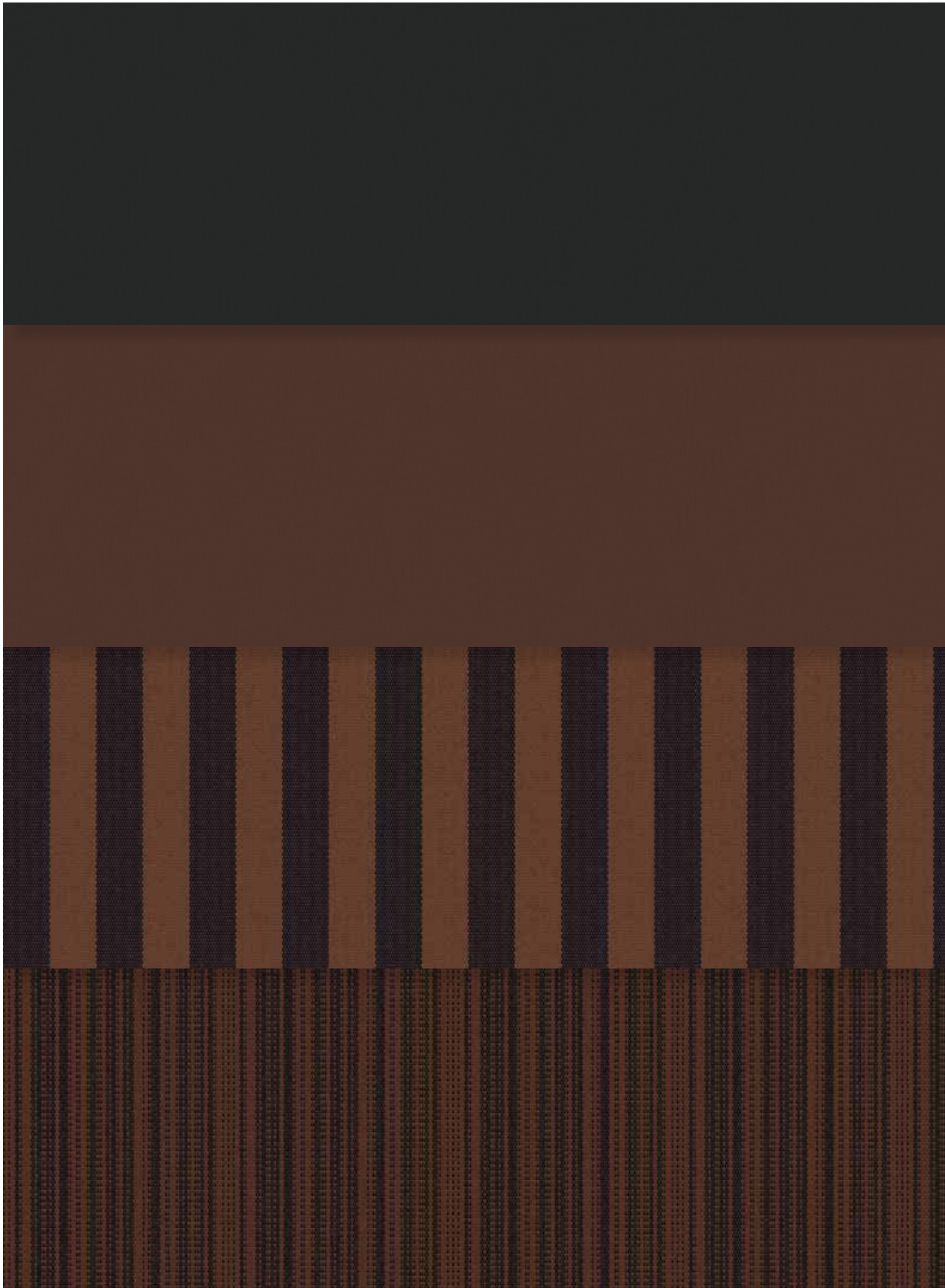
57436

57844

57437



AD HOC²



57549

57577

57438

57439



AD HOC²



57557



57440



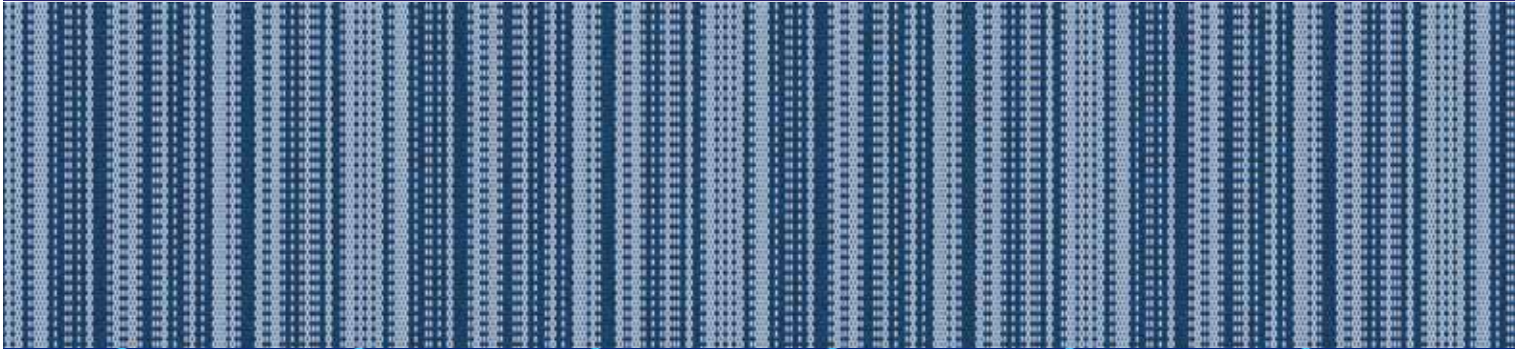
57857



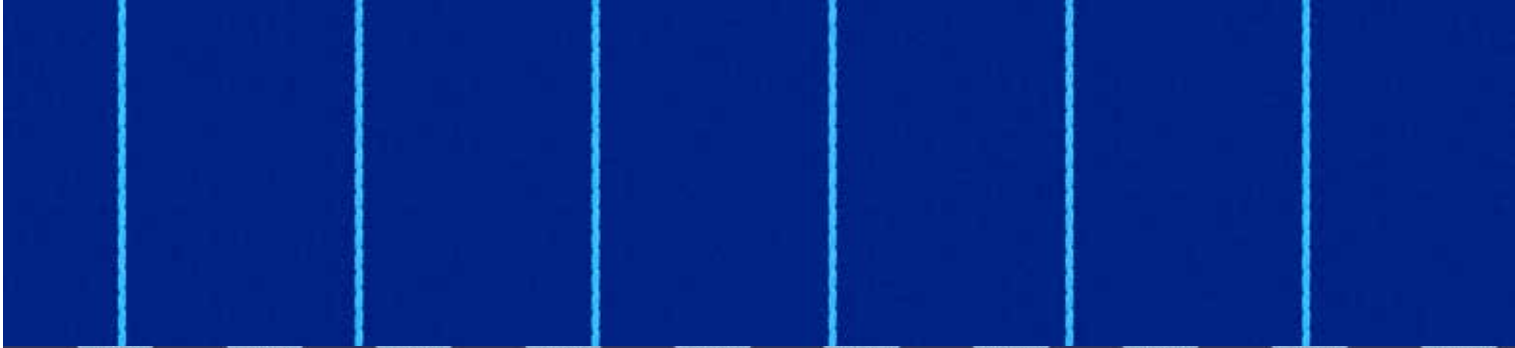
AD HOC²



57581



57471



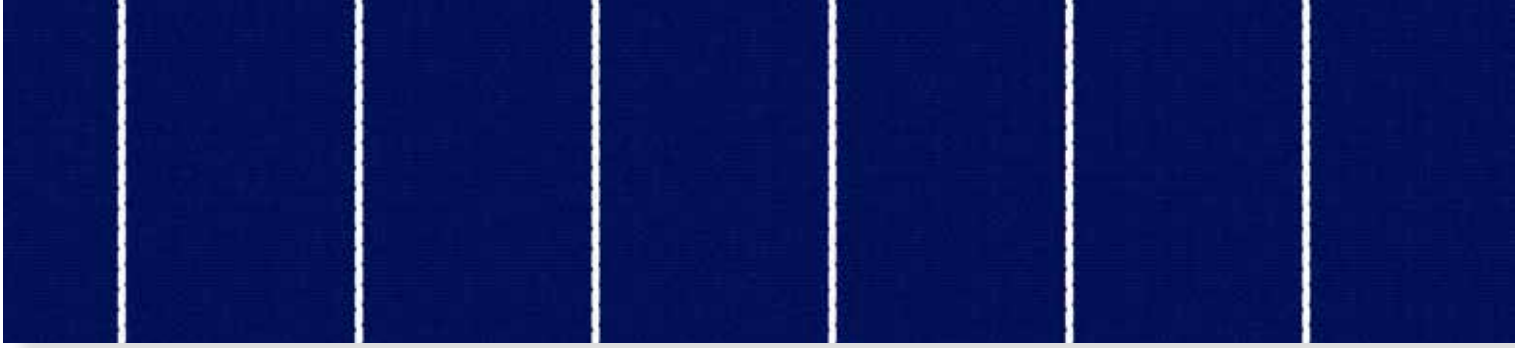
57891



57472



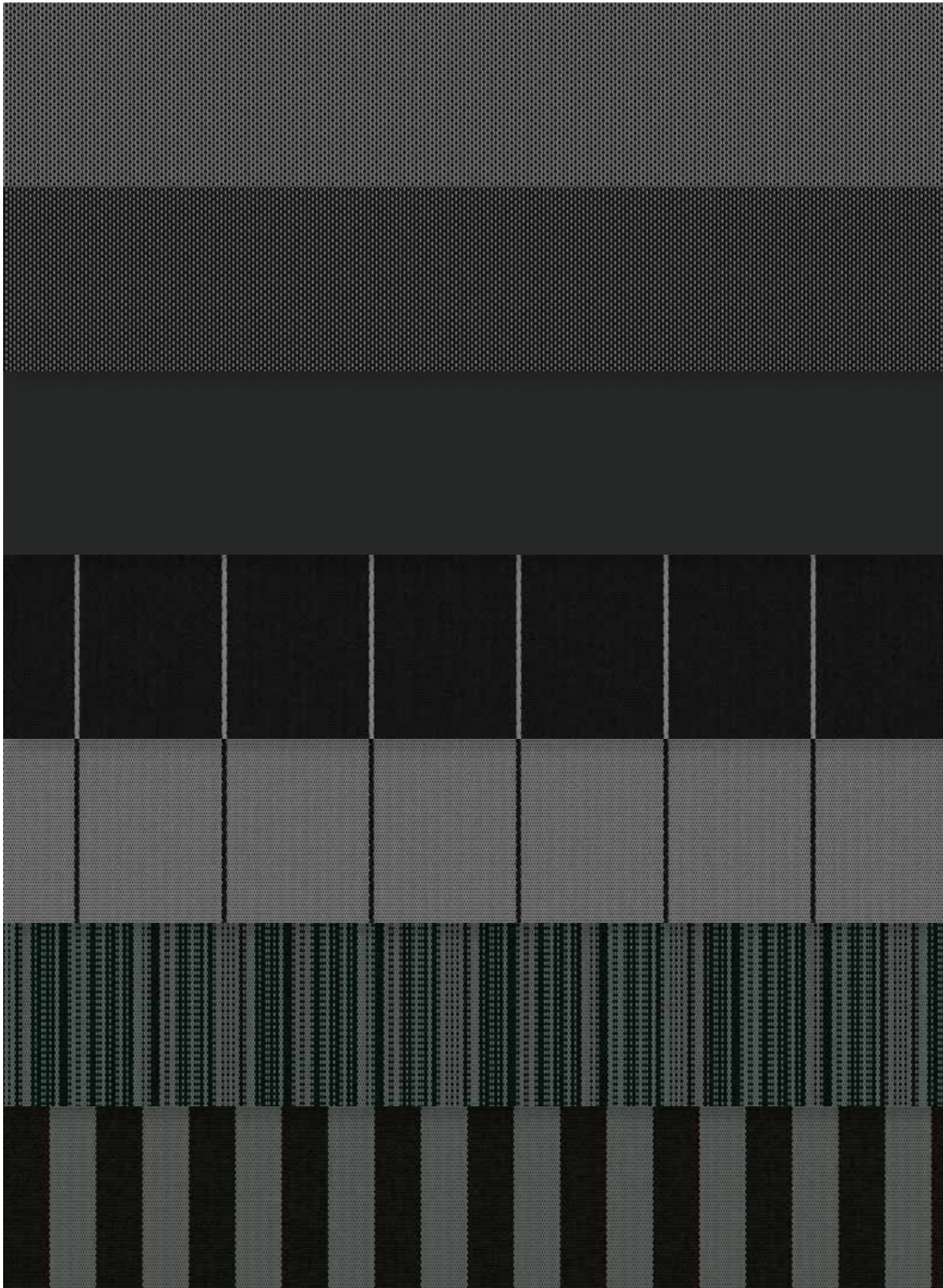
57545



57895



AD HOC²



57028

57008

57549

57849

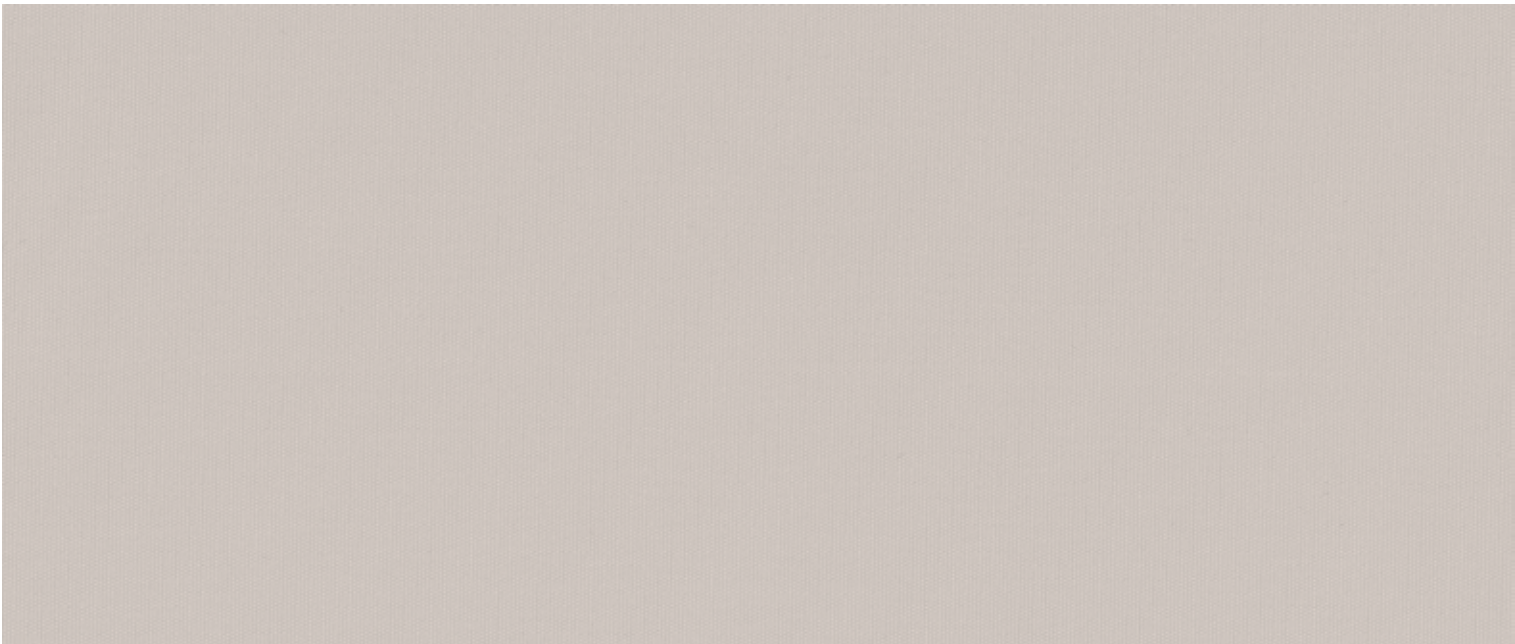
57818

57473

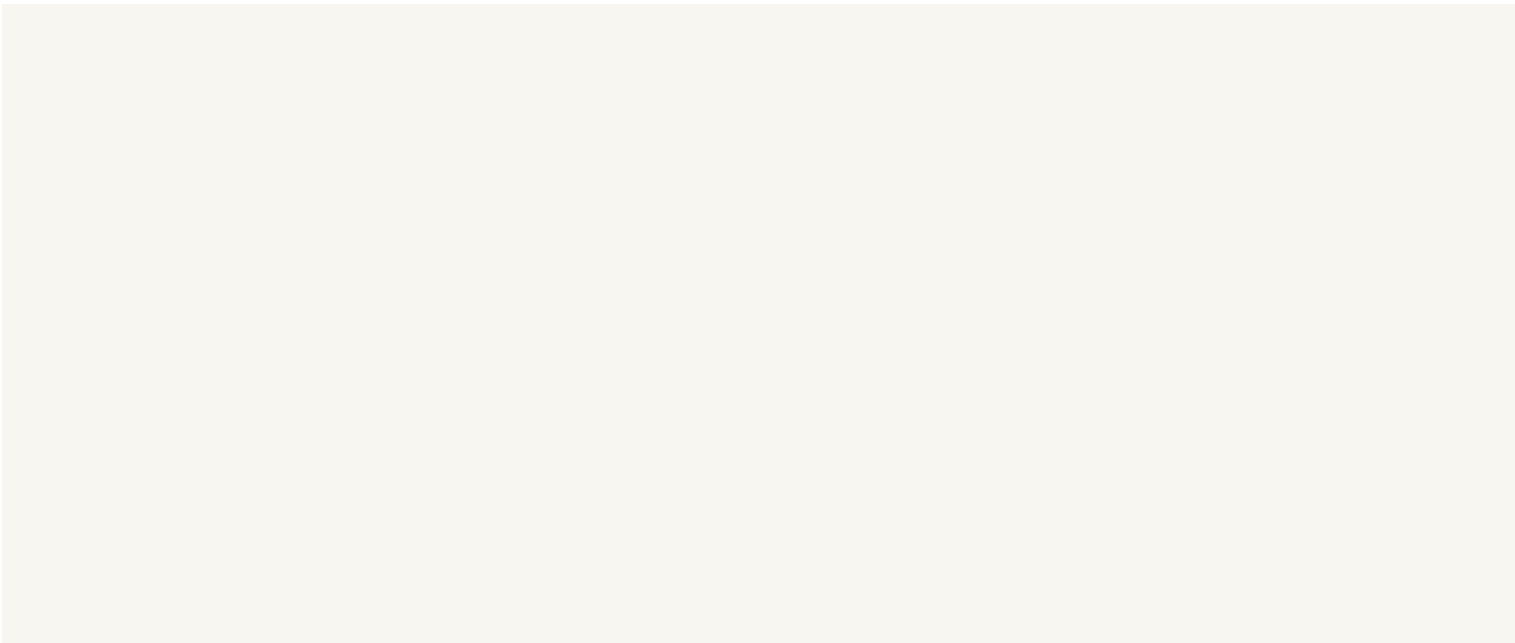
57474



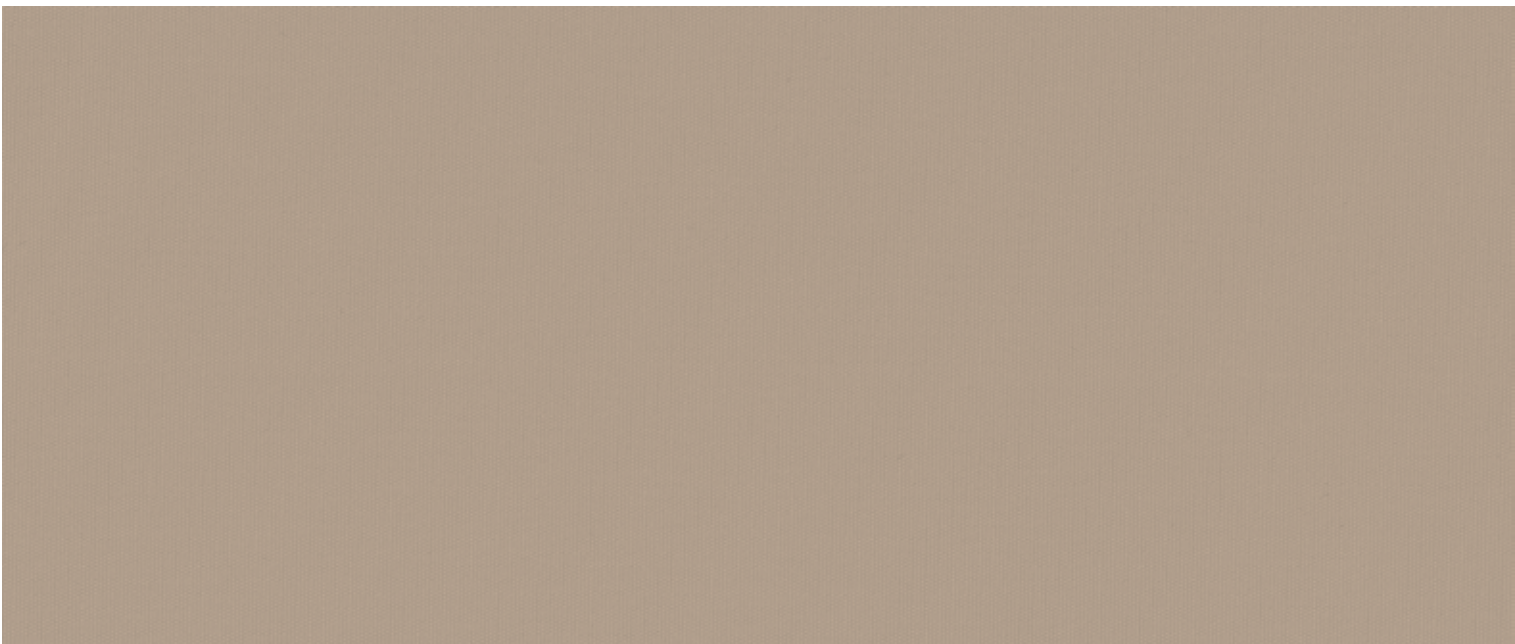
AD HOC¹



57510



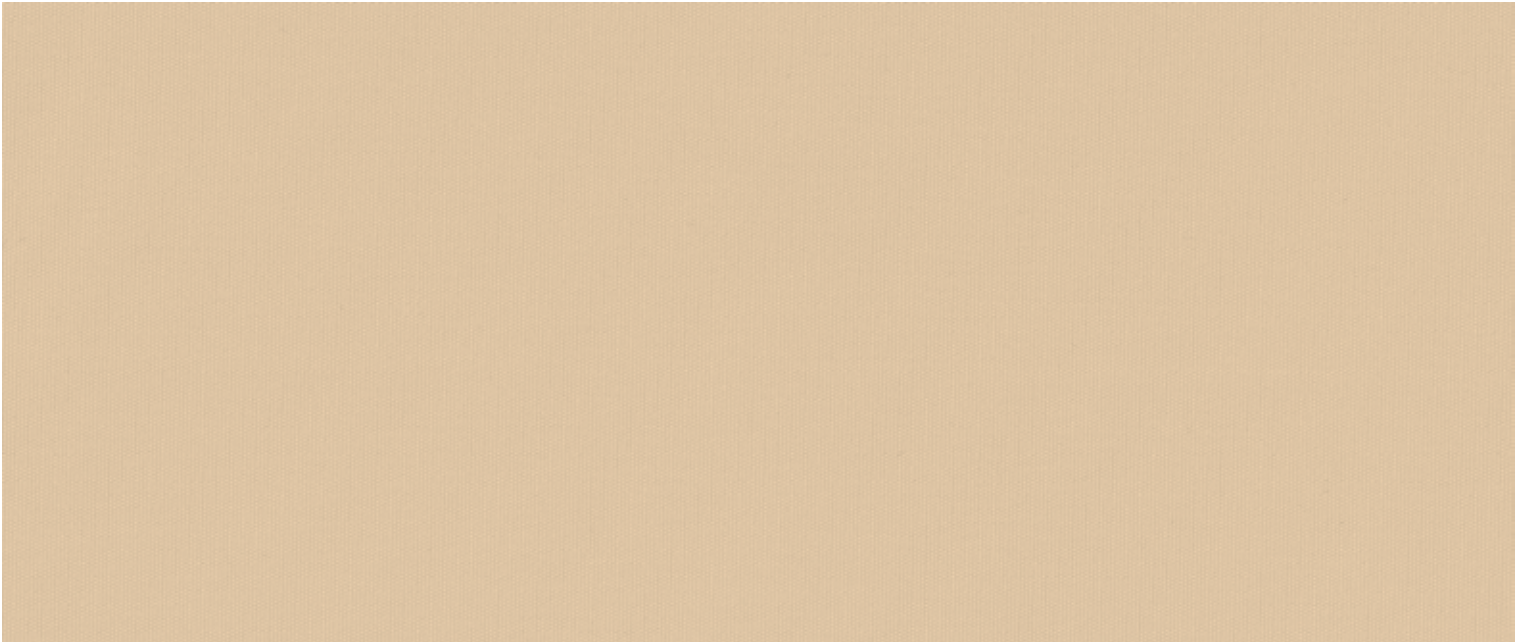
57537



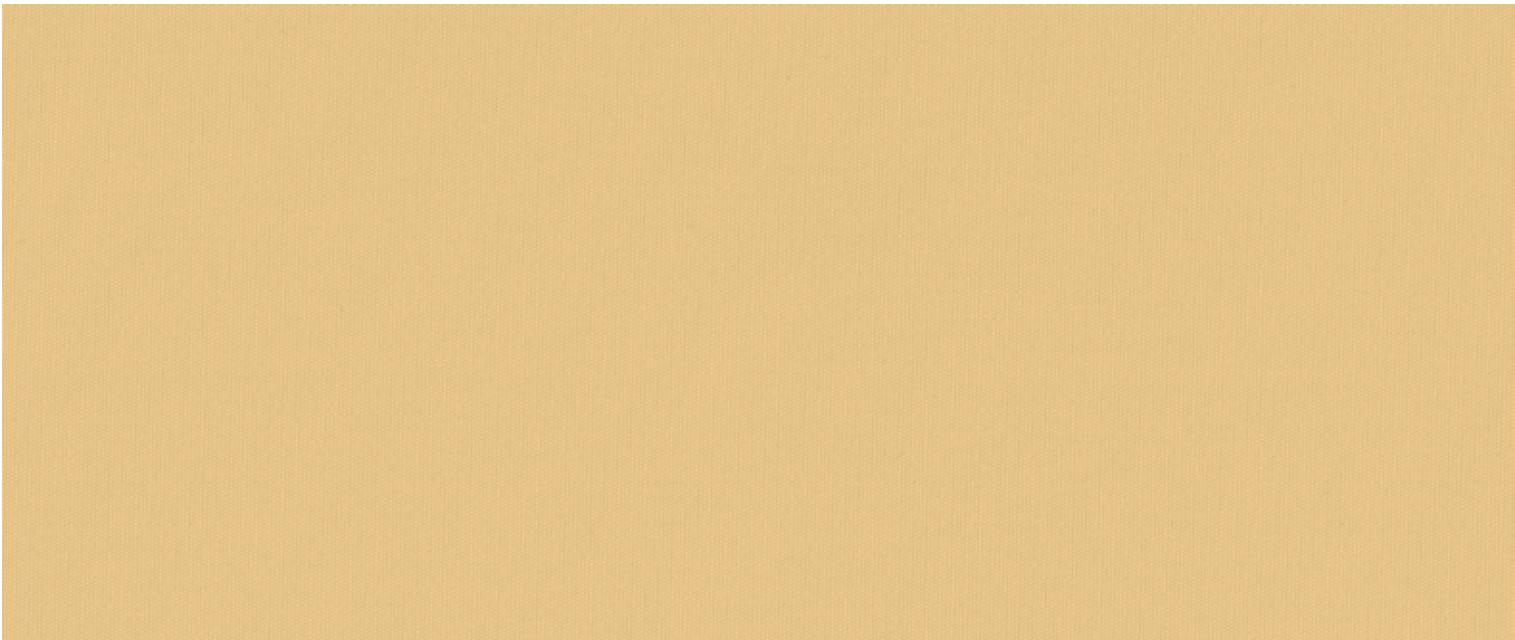
57643



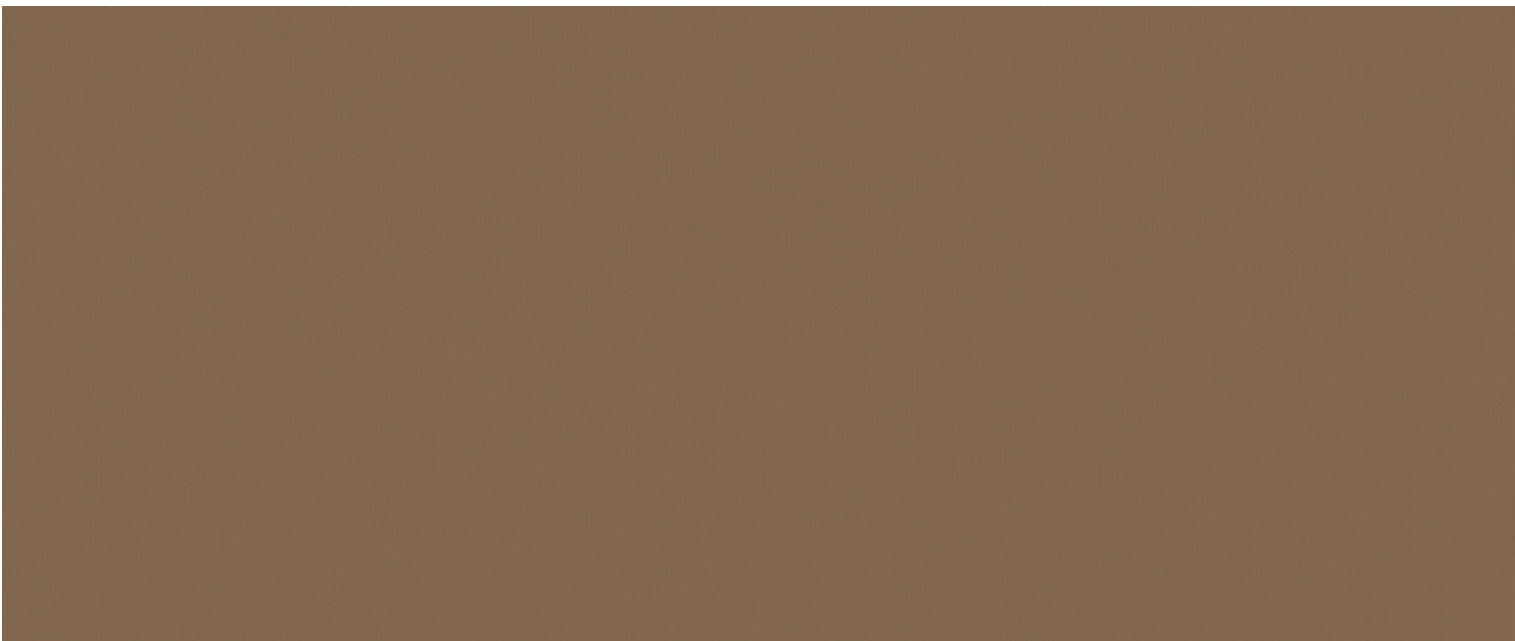
AD HOC¹



57541



57571



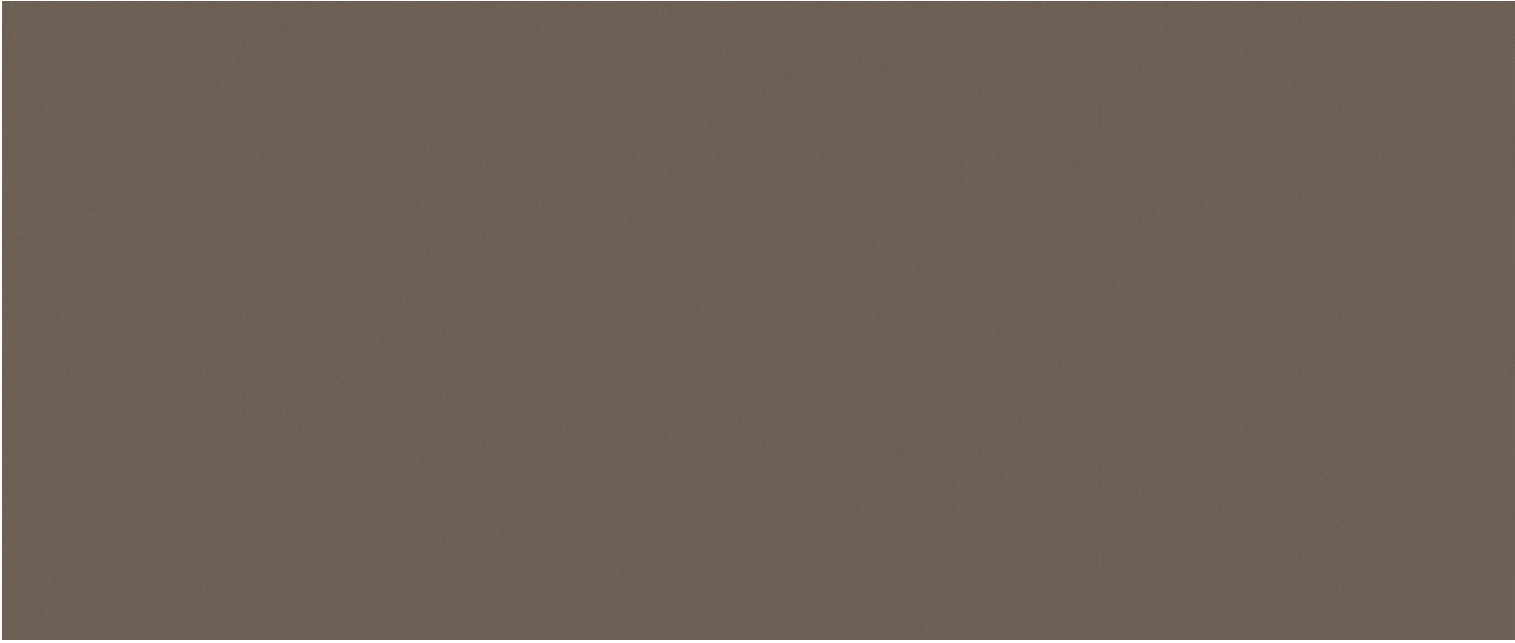
57544



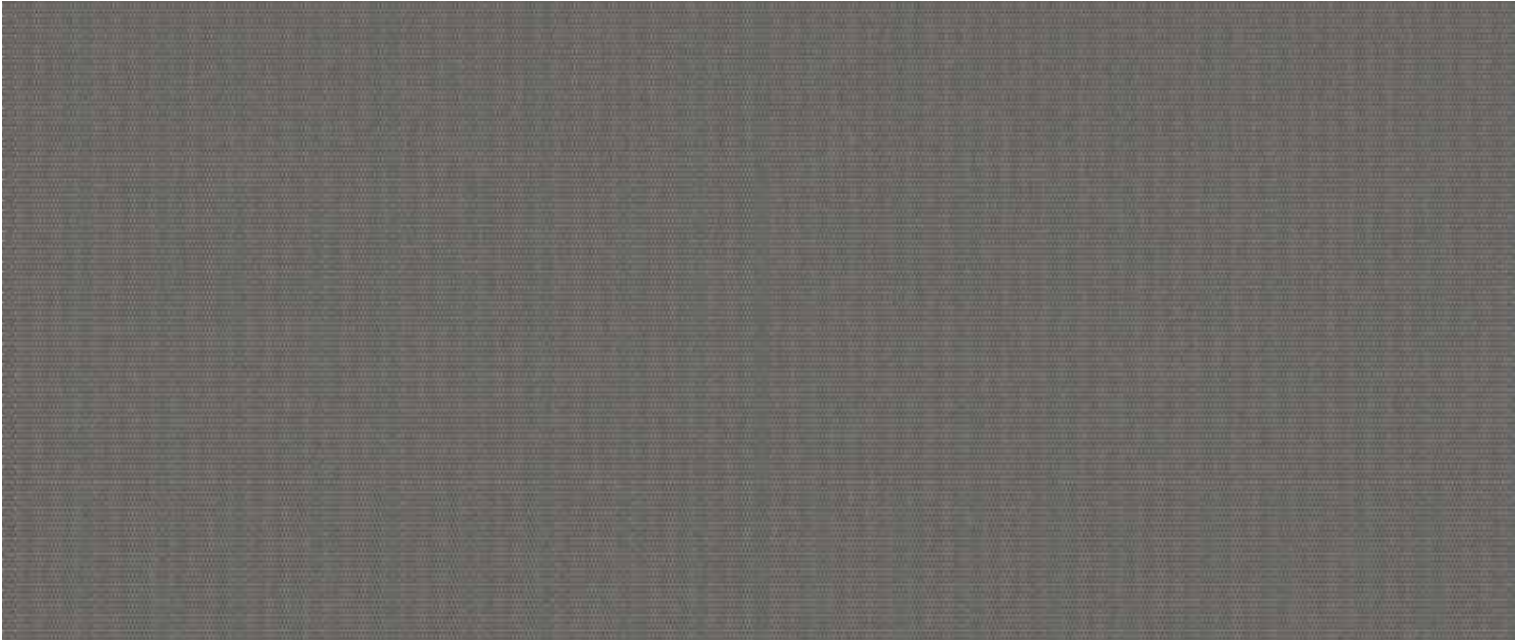
AD HOC¹



57584



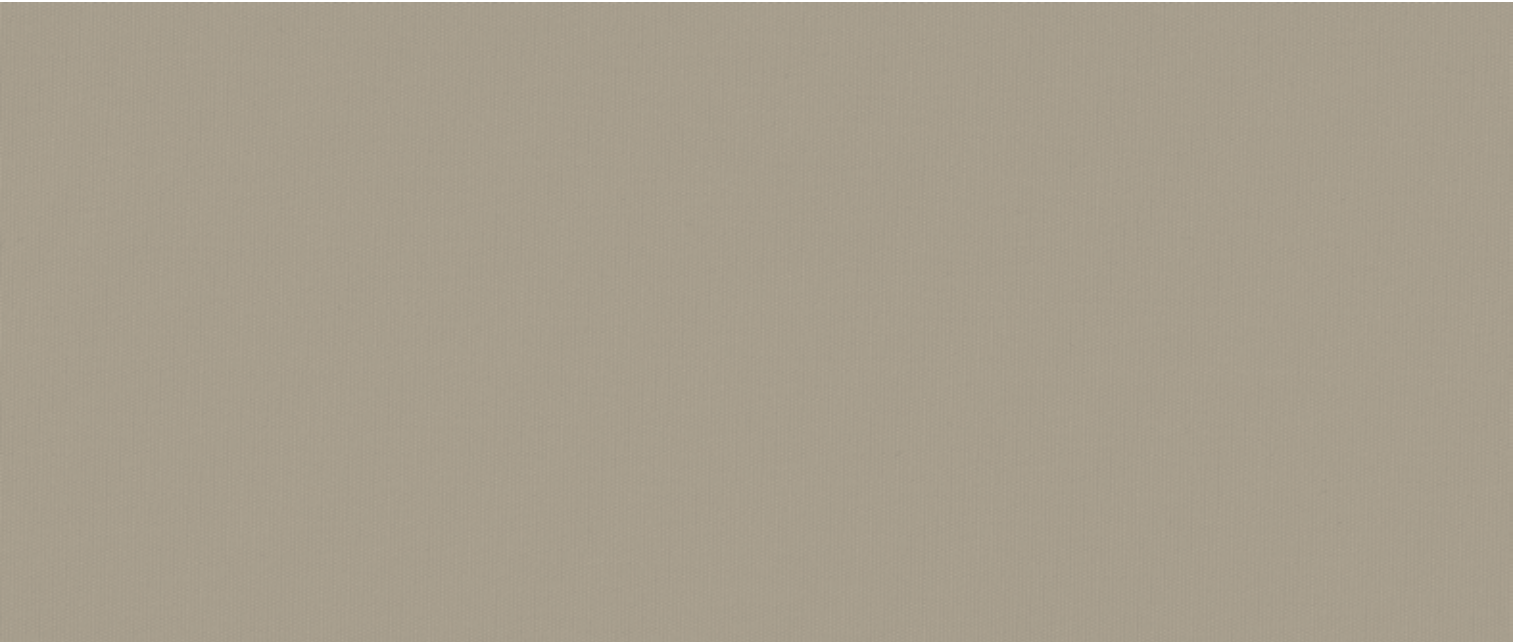
57517



57001



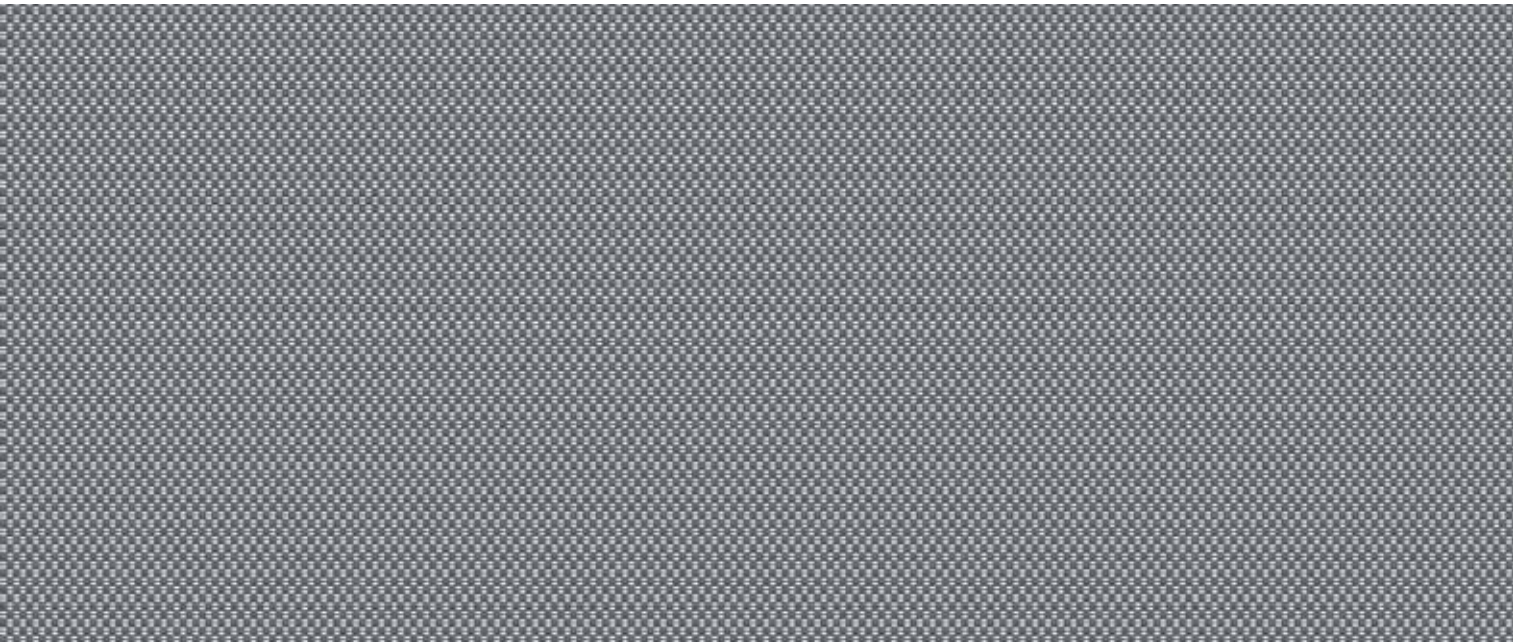
AD HOC¹



57527



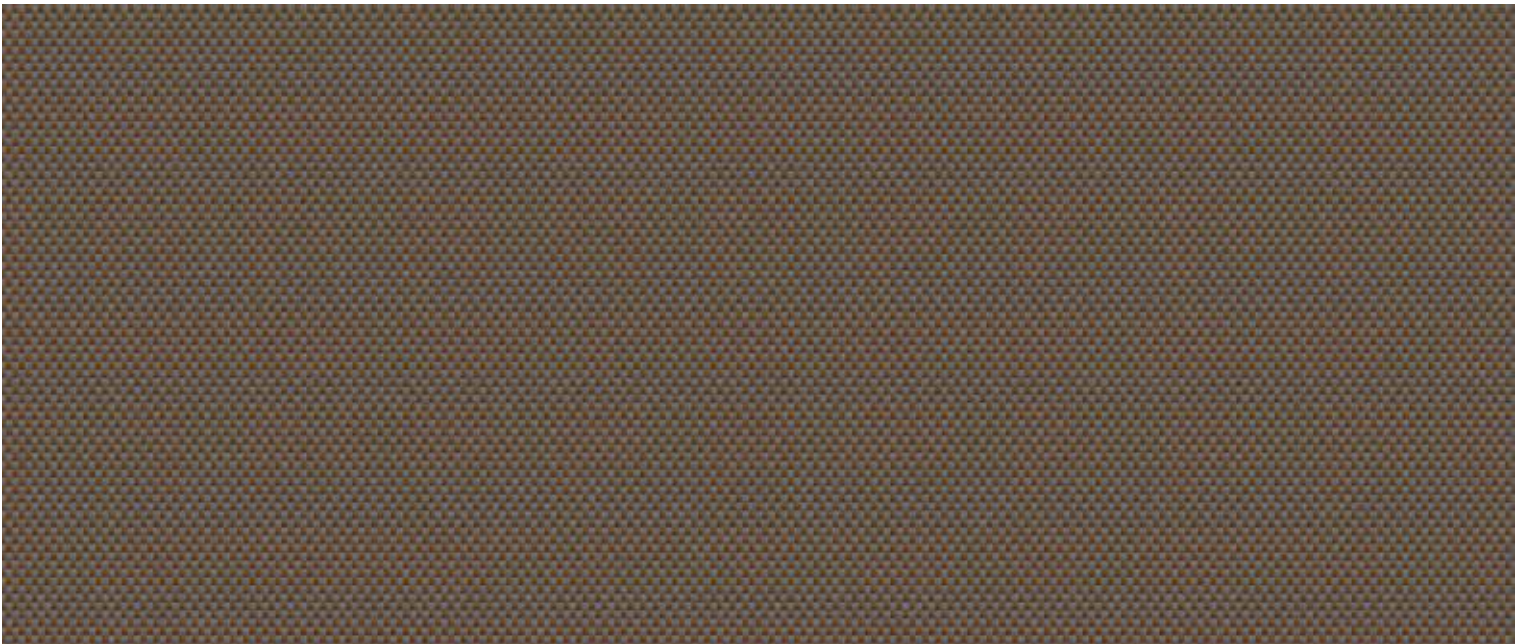
57538



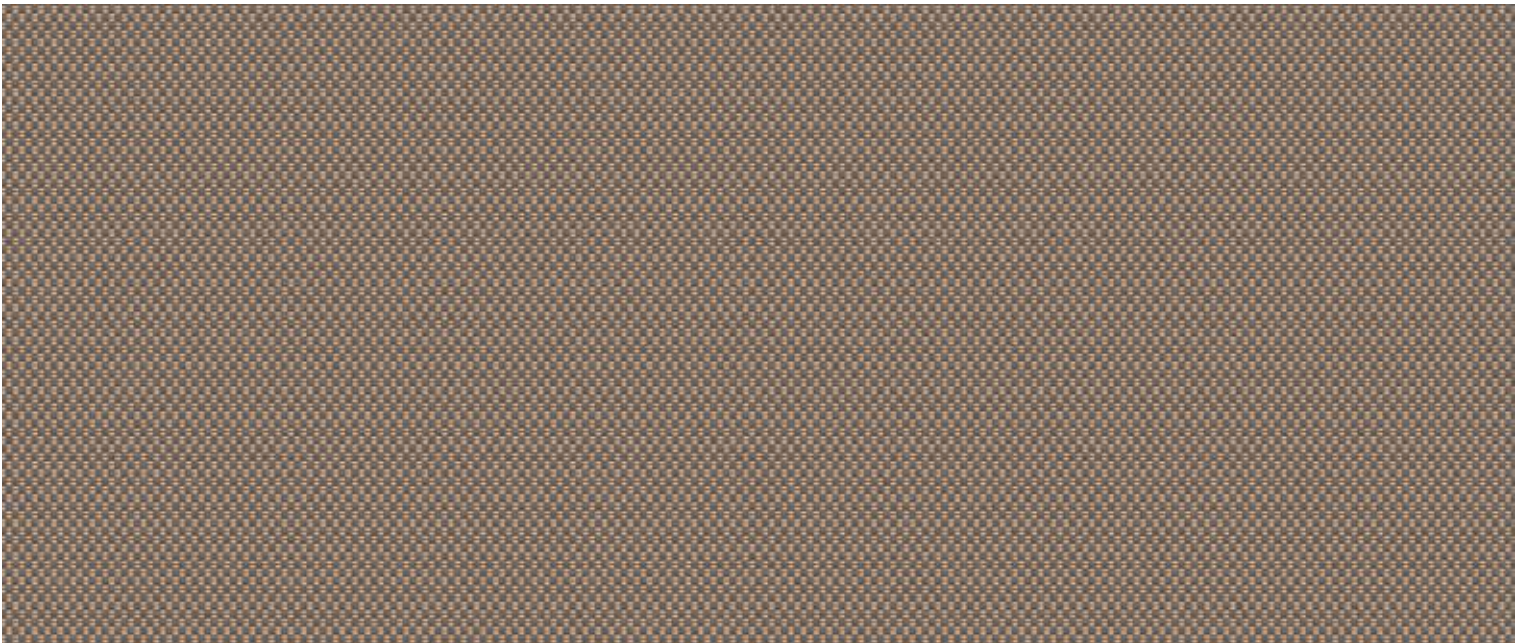
57648



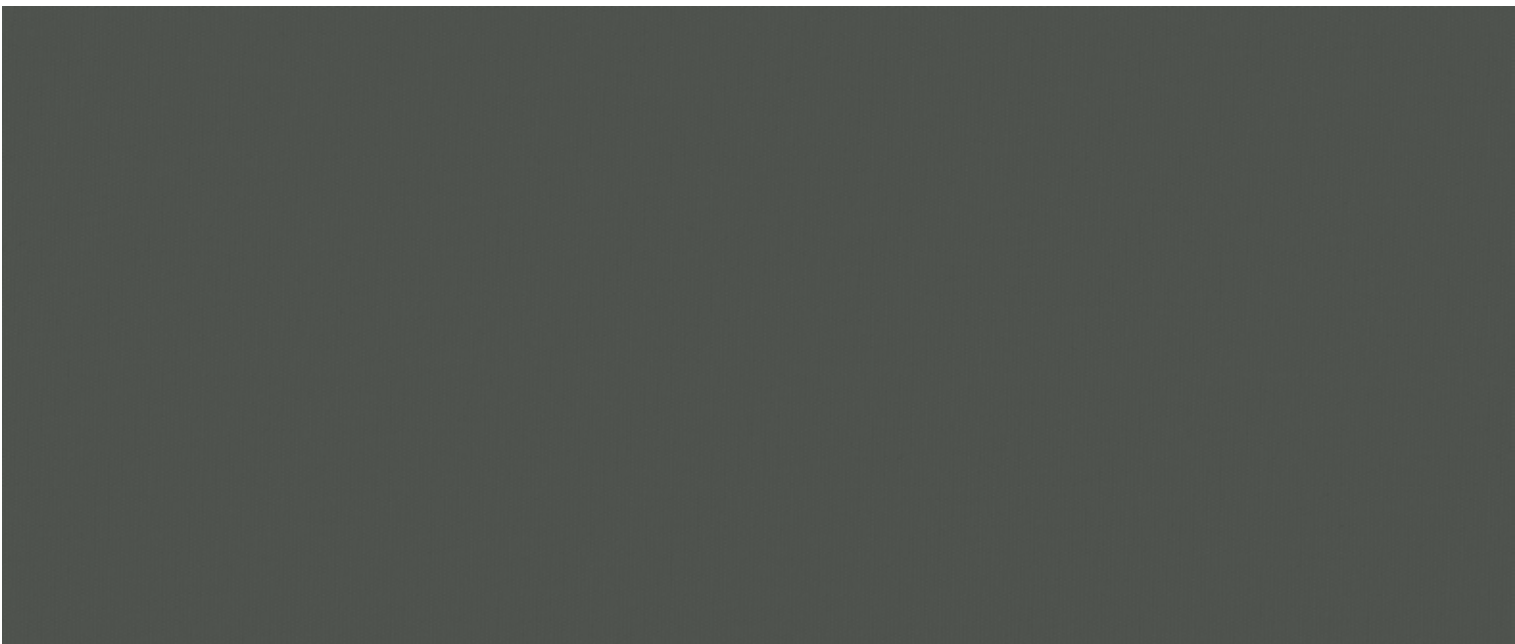
AD HOC¹



57646



57647



57578



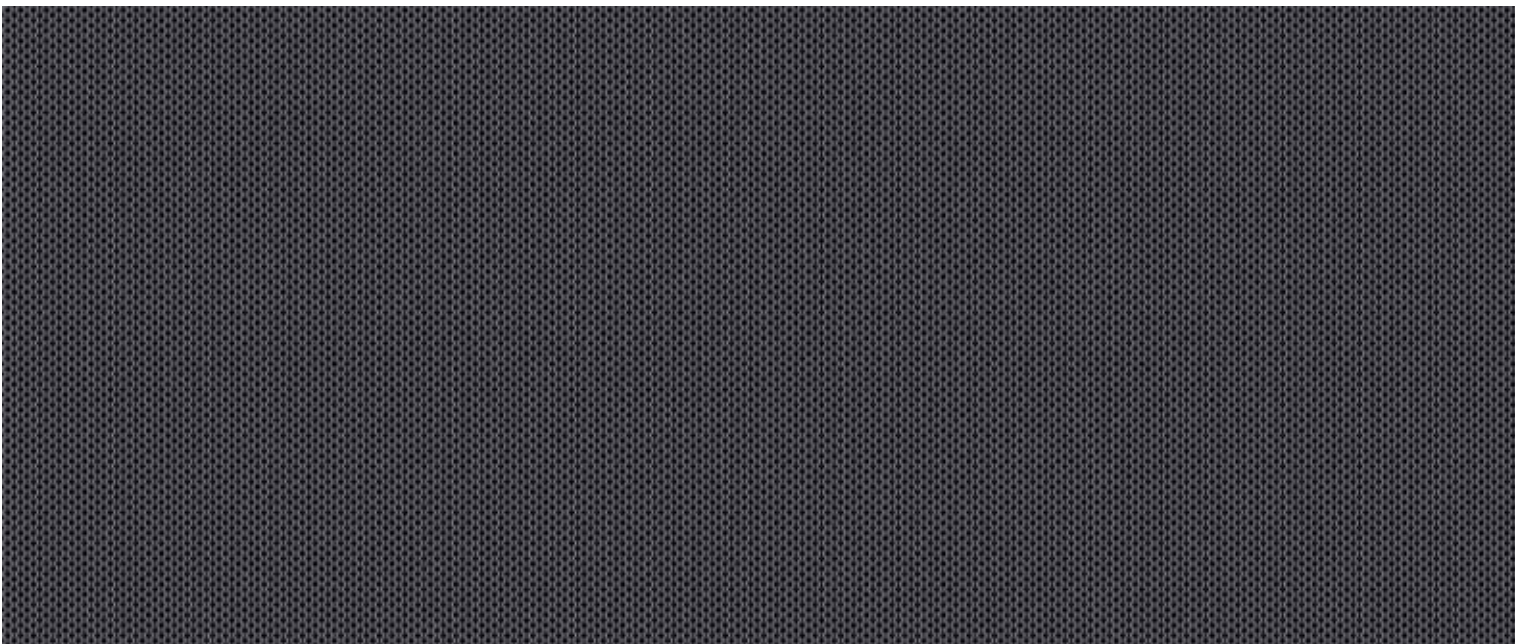
AD HOC¹



57548



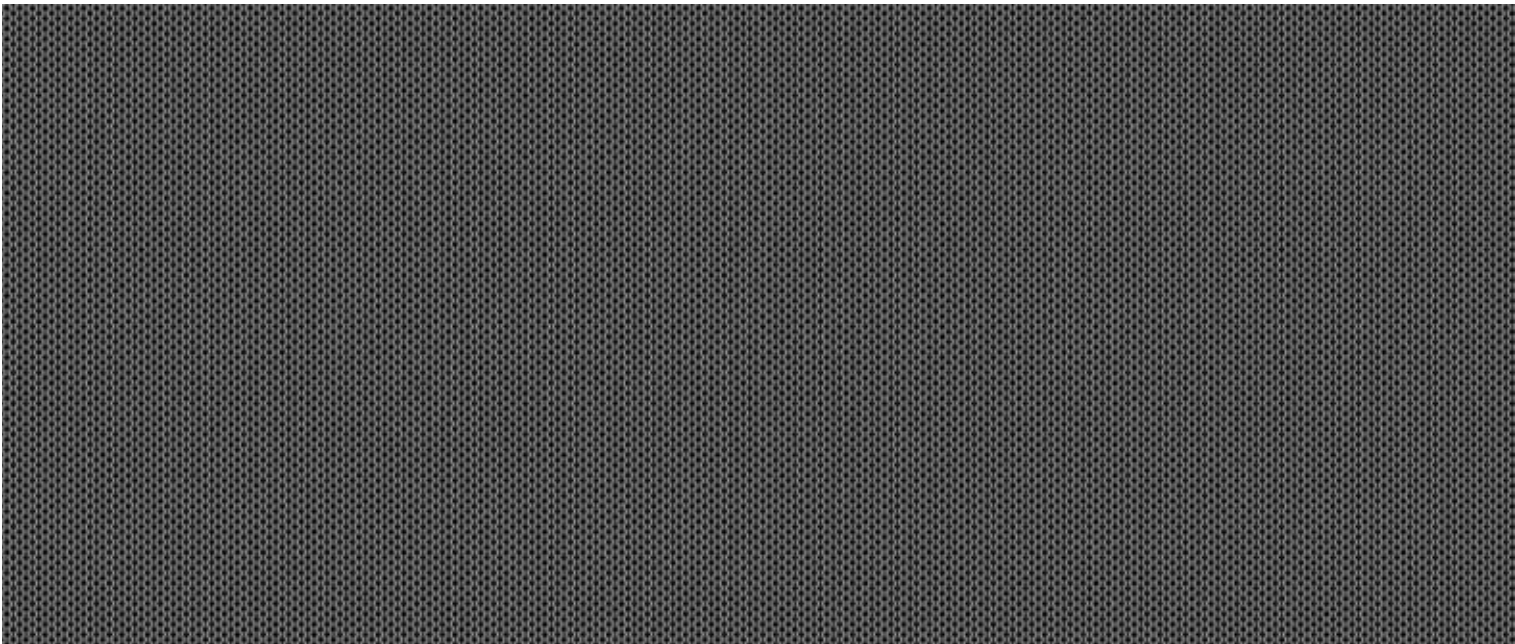
57528



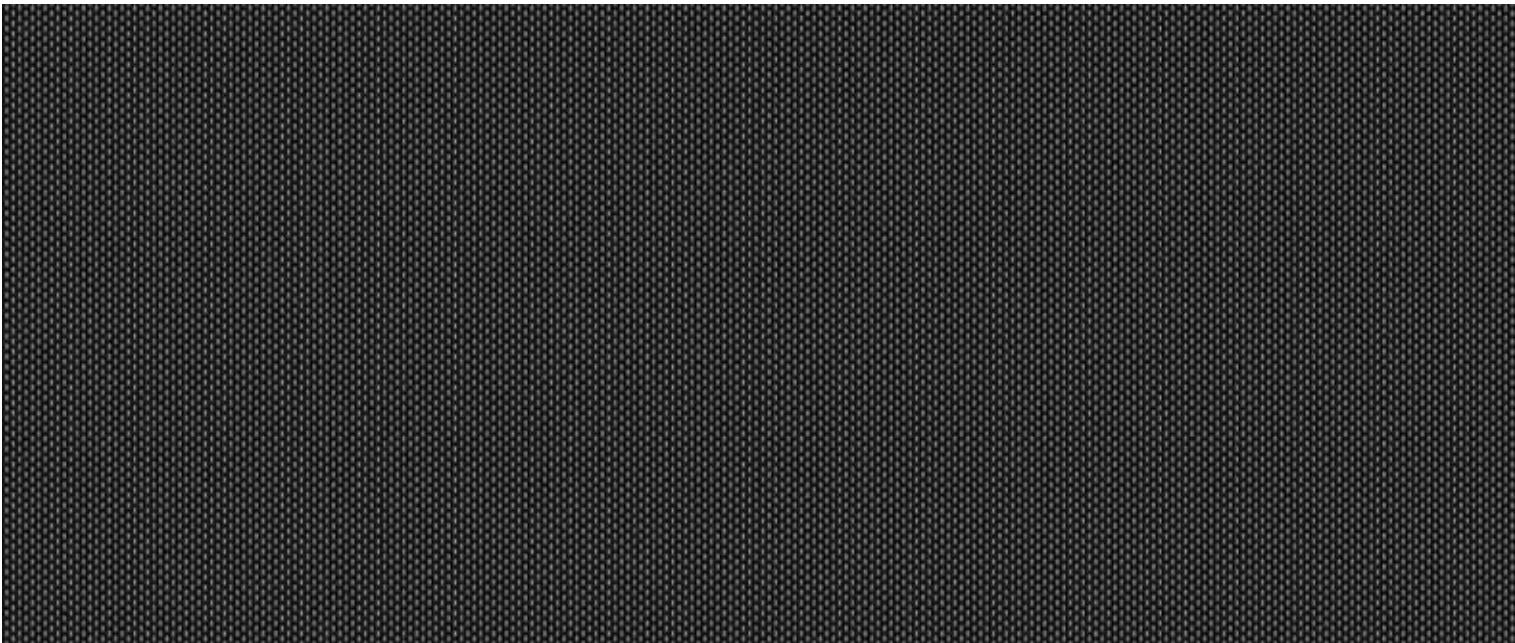
57018



AD HOC¹



57028



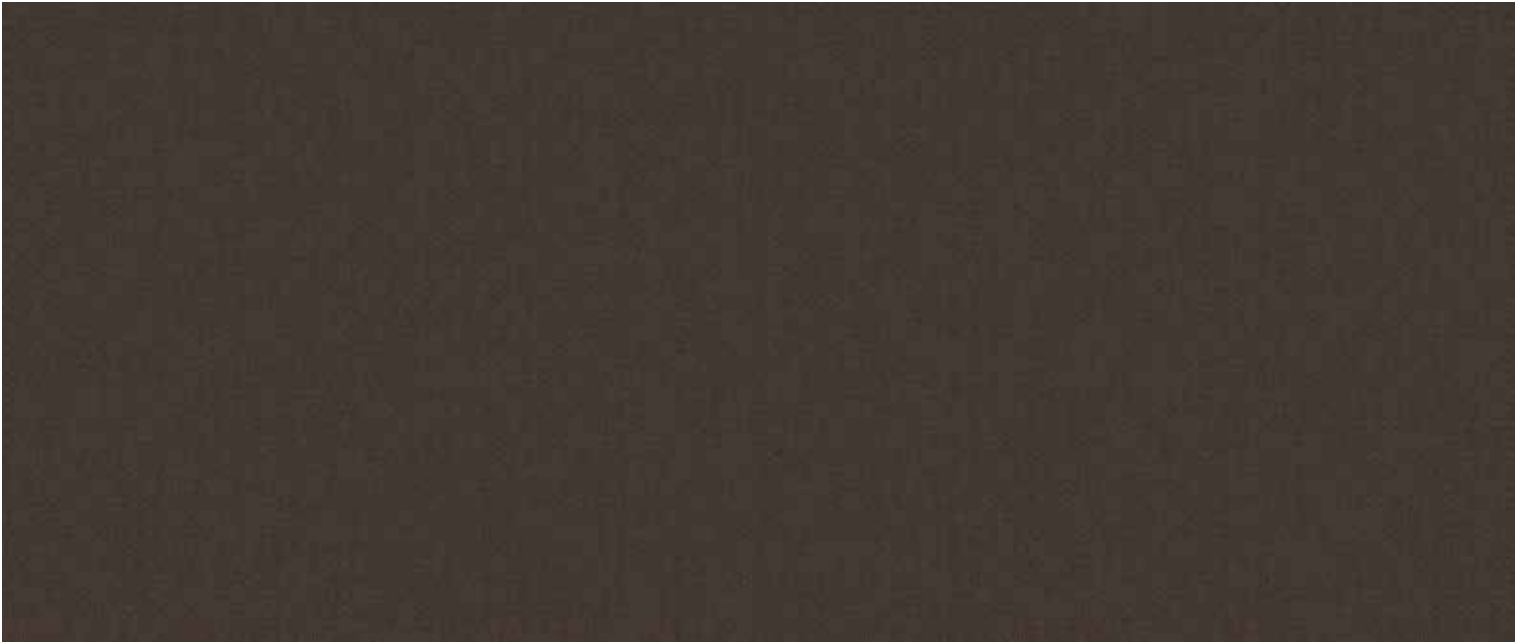
57008



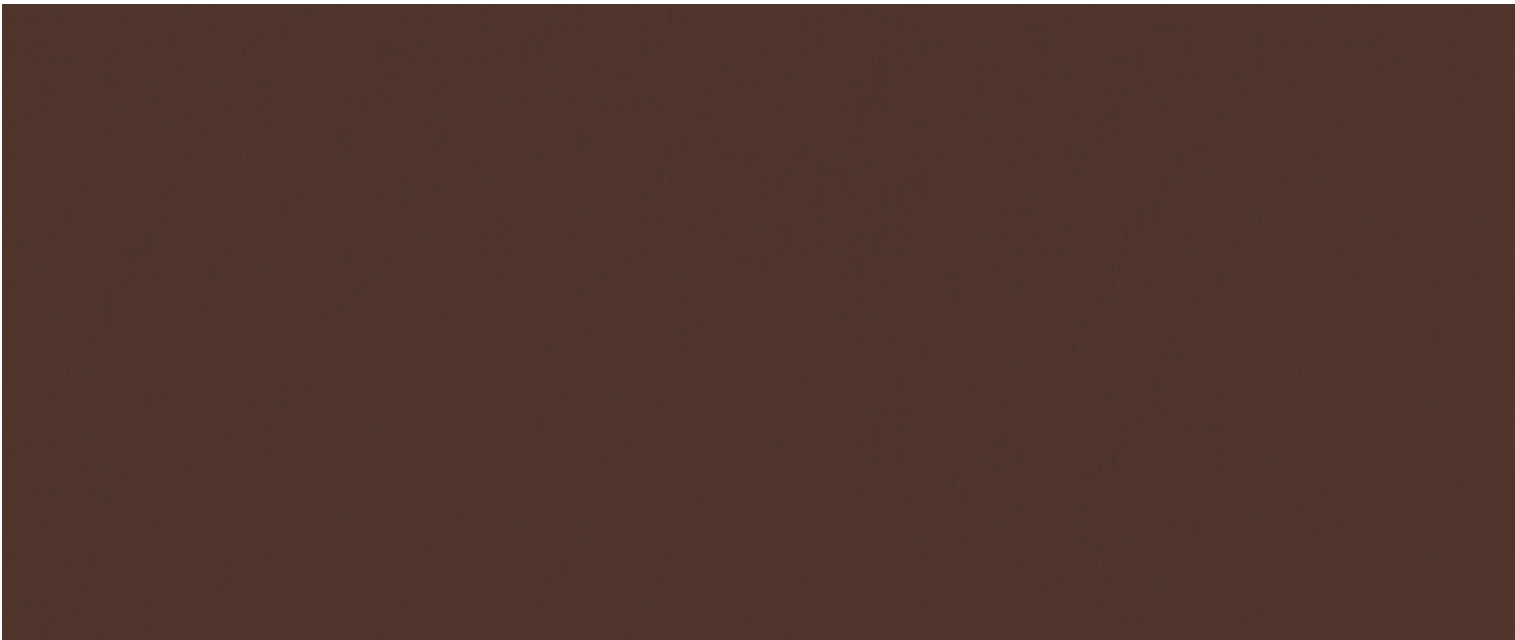
57549



AD HOC¹



57005



57577



57566



AD HOC¹



57586



57535



57595



AD HOC¹



57545



57515



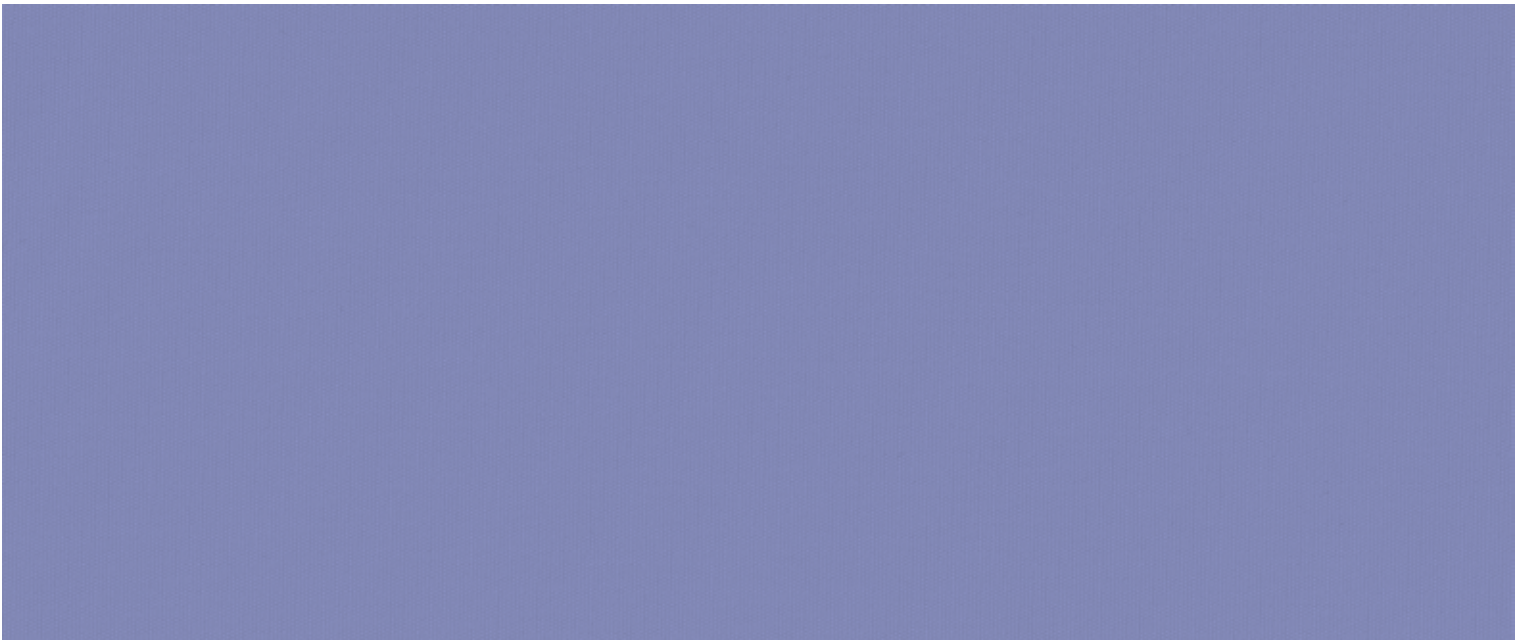
57591



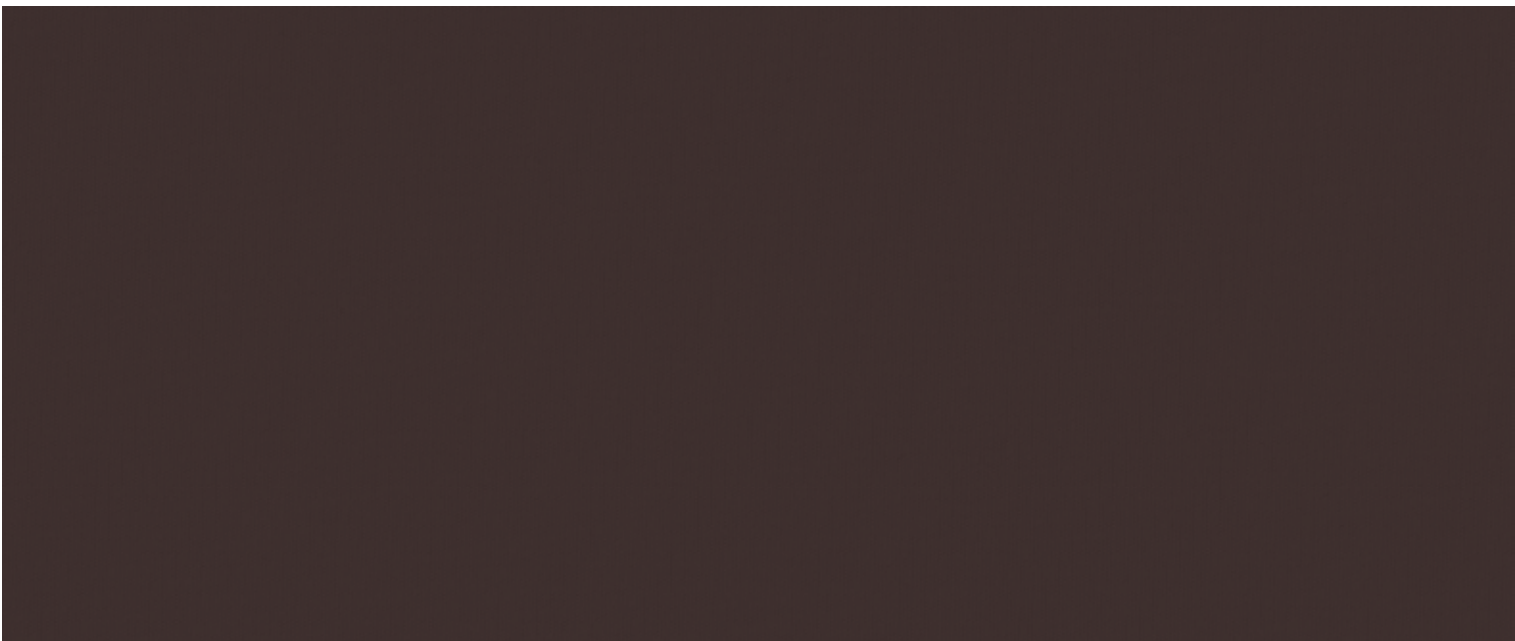
AD HOC¹



57581



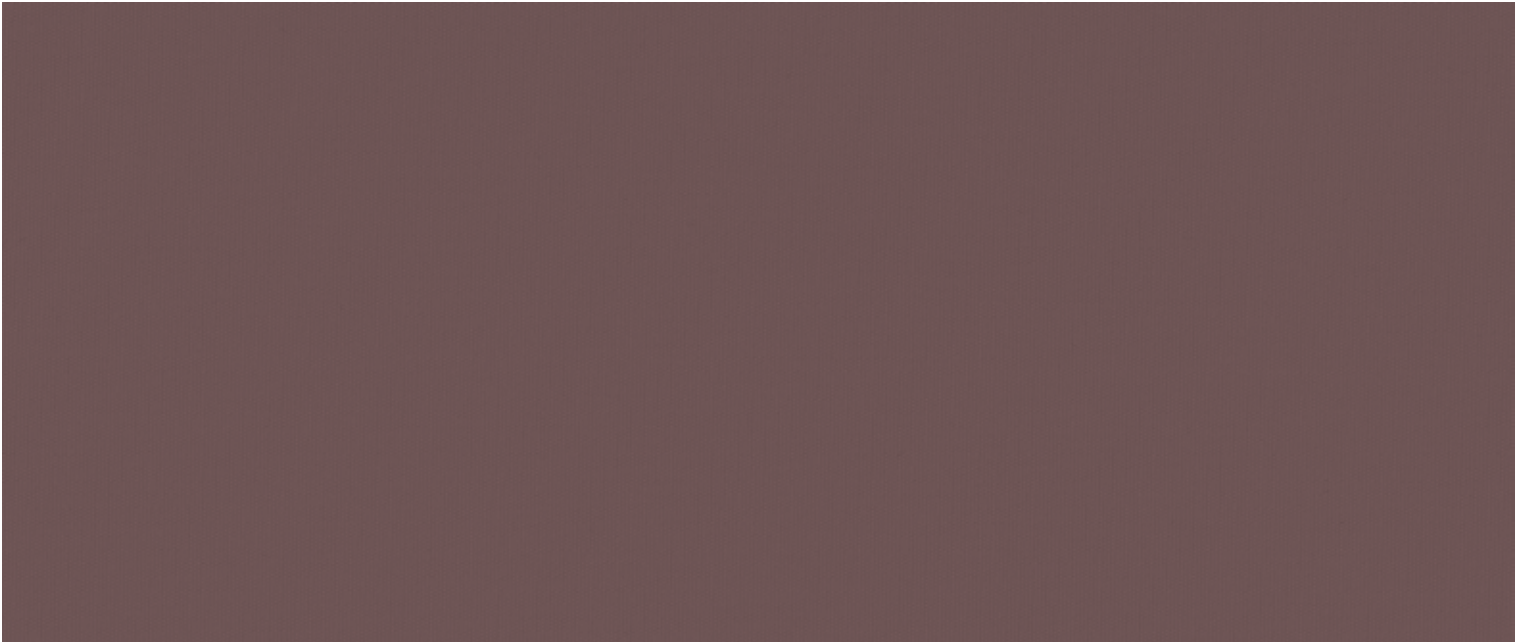
57574



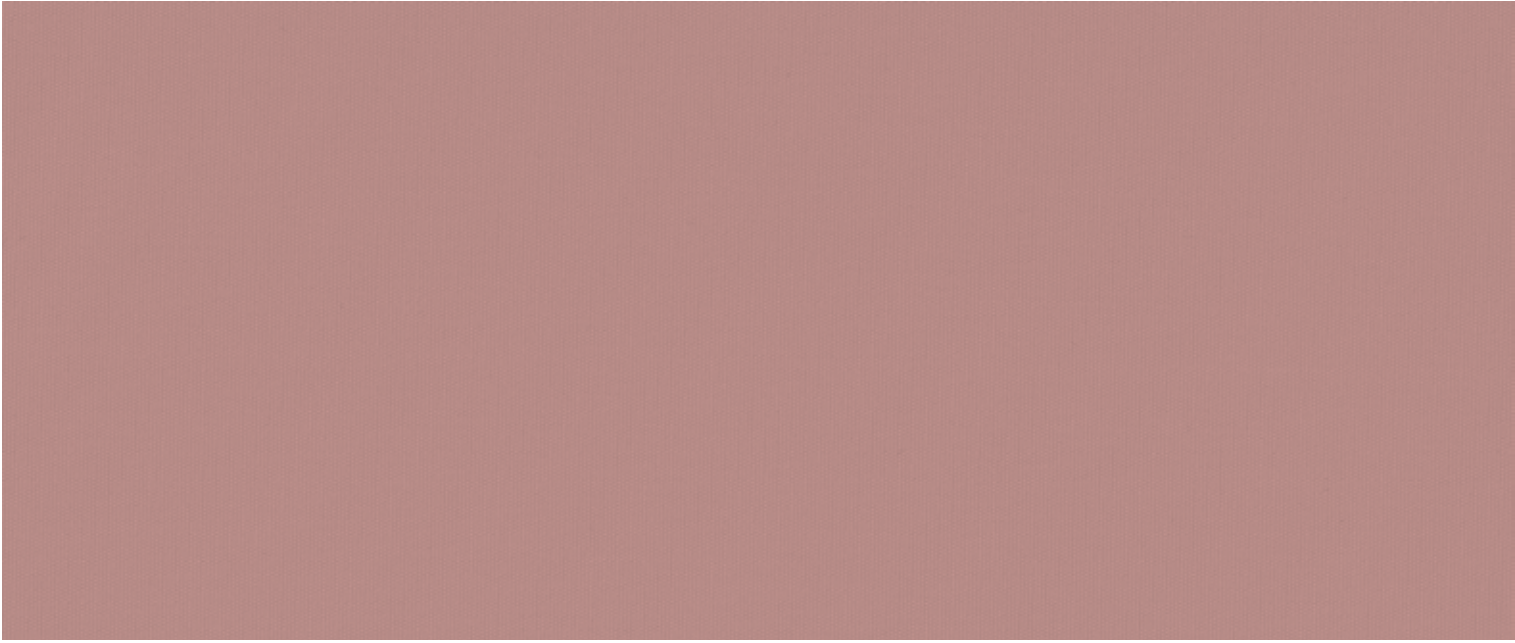
57524



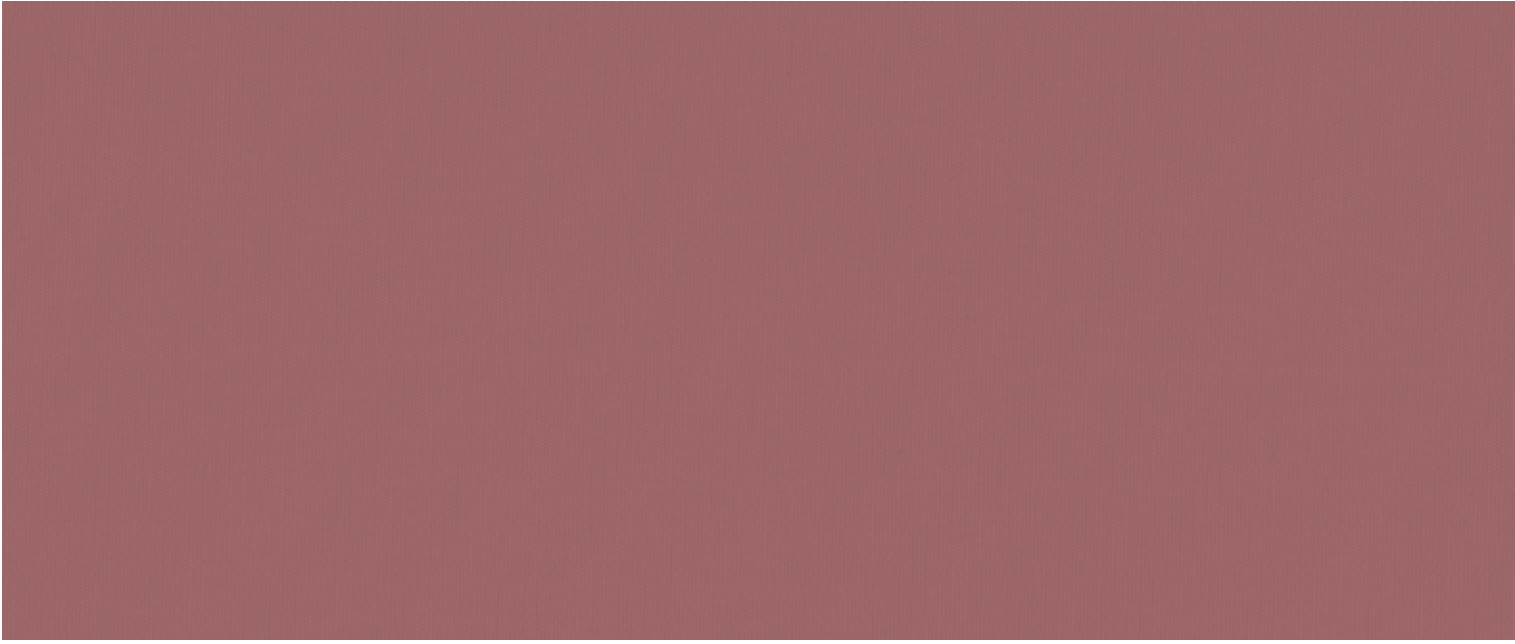
AD HOC¹



57534



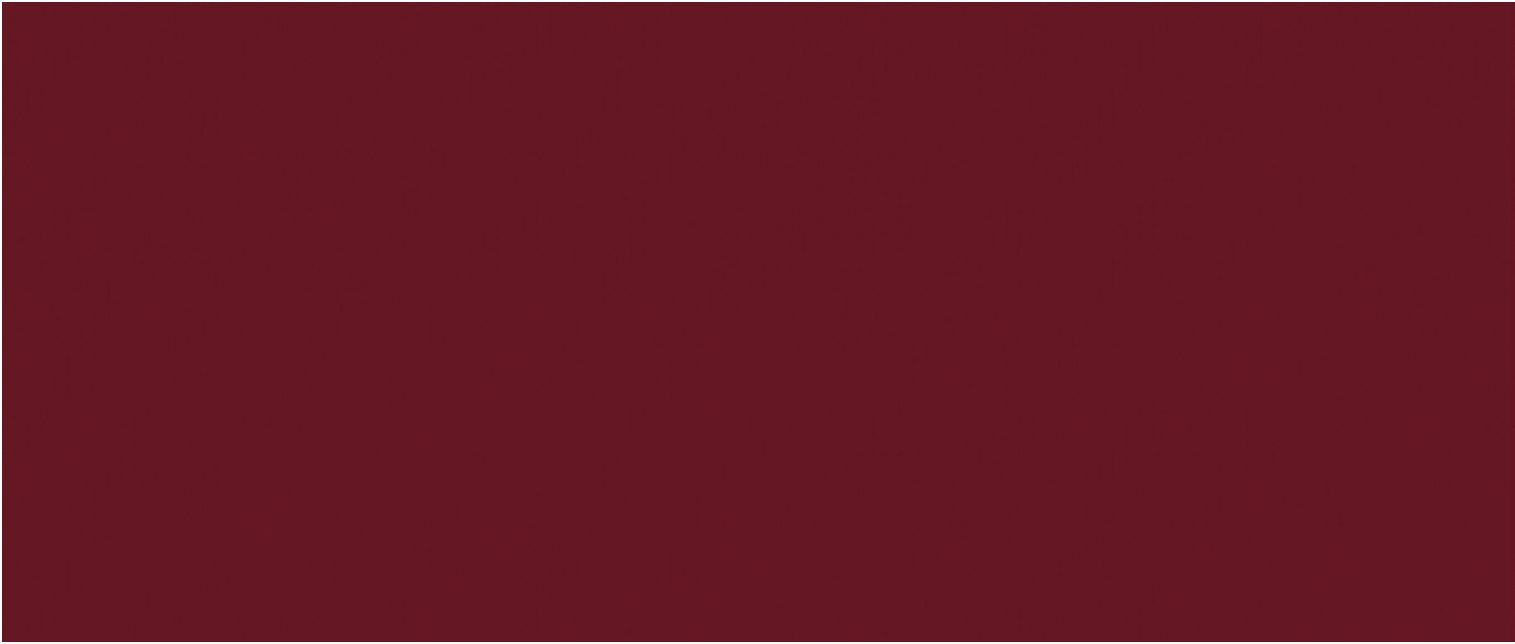
57554



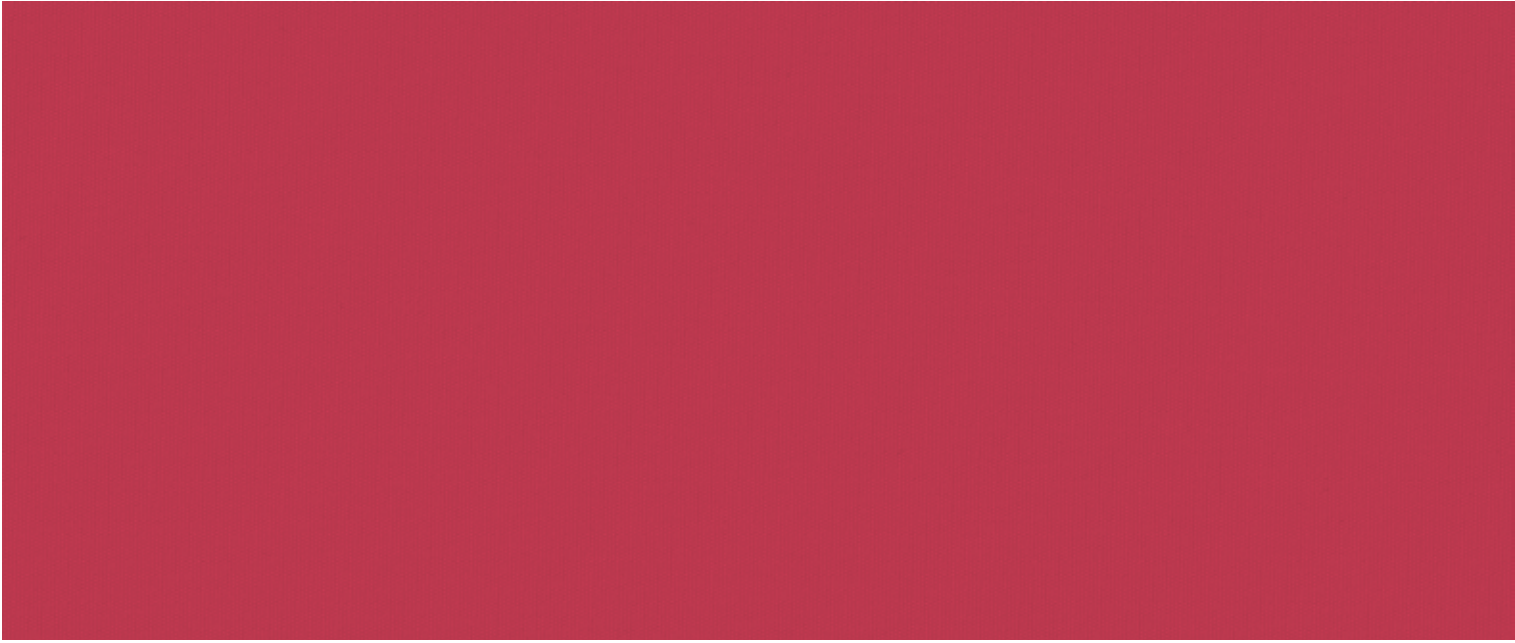
57564



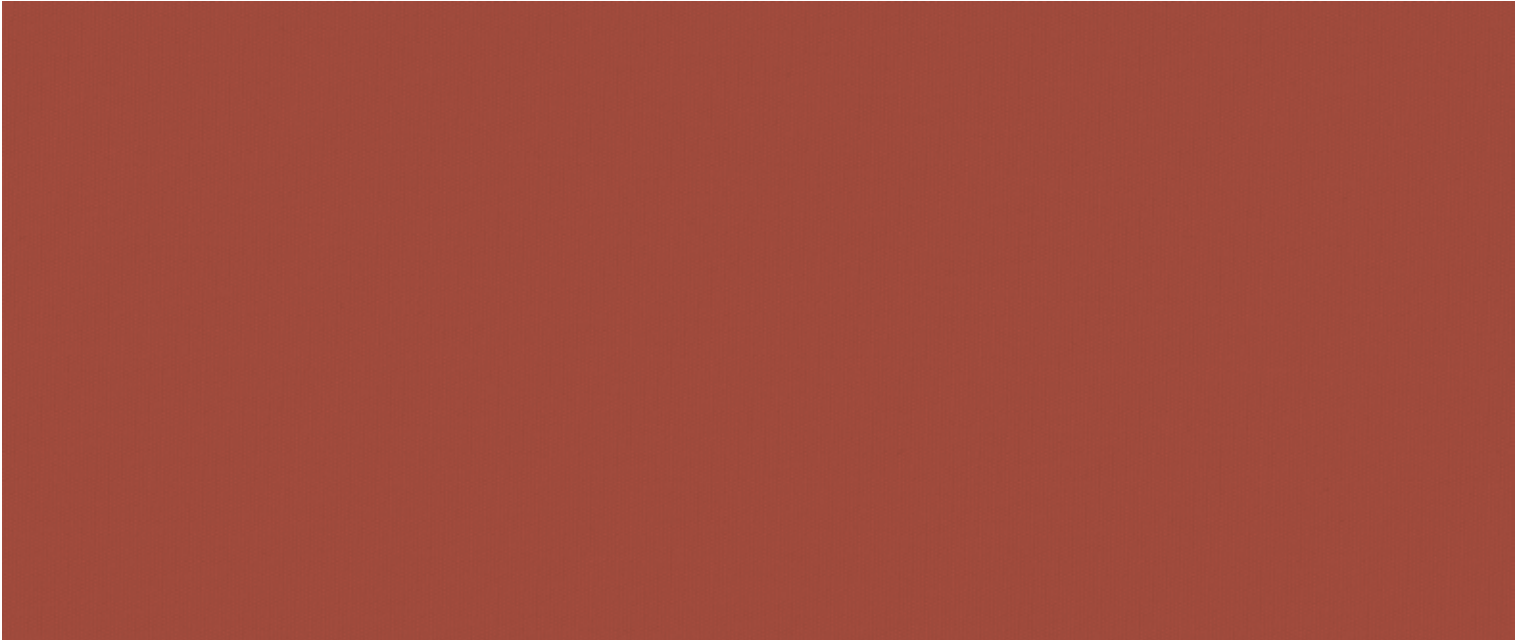
AD HOC¹



57557



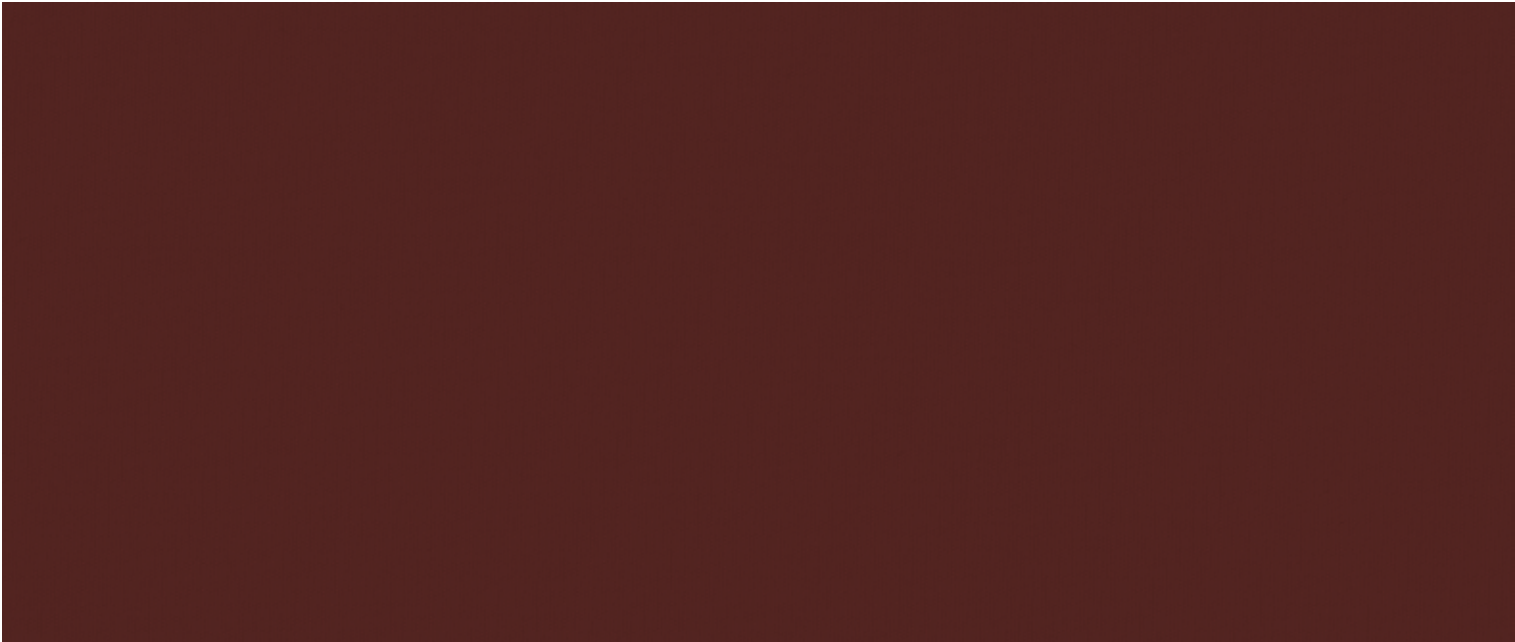
57514



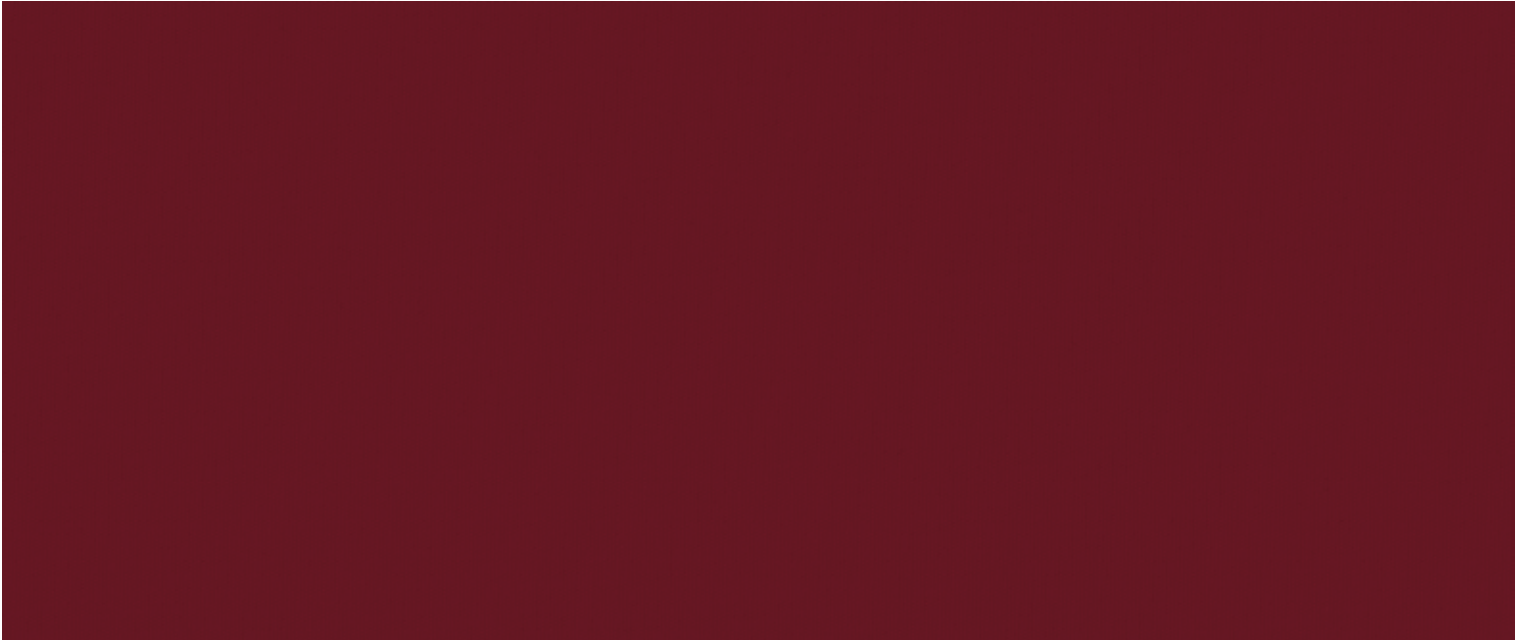
57573



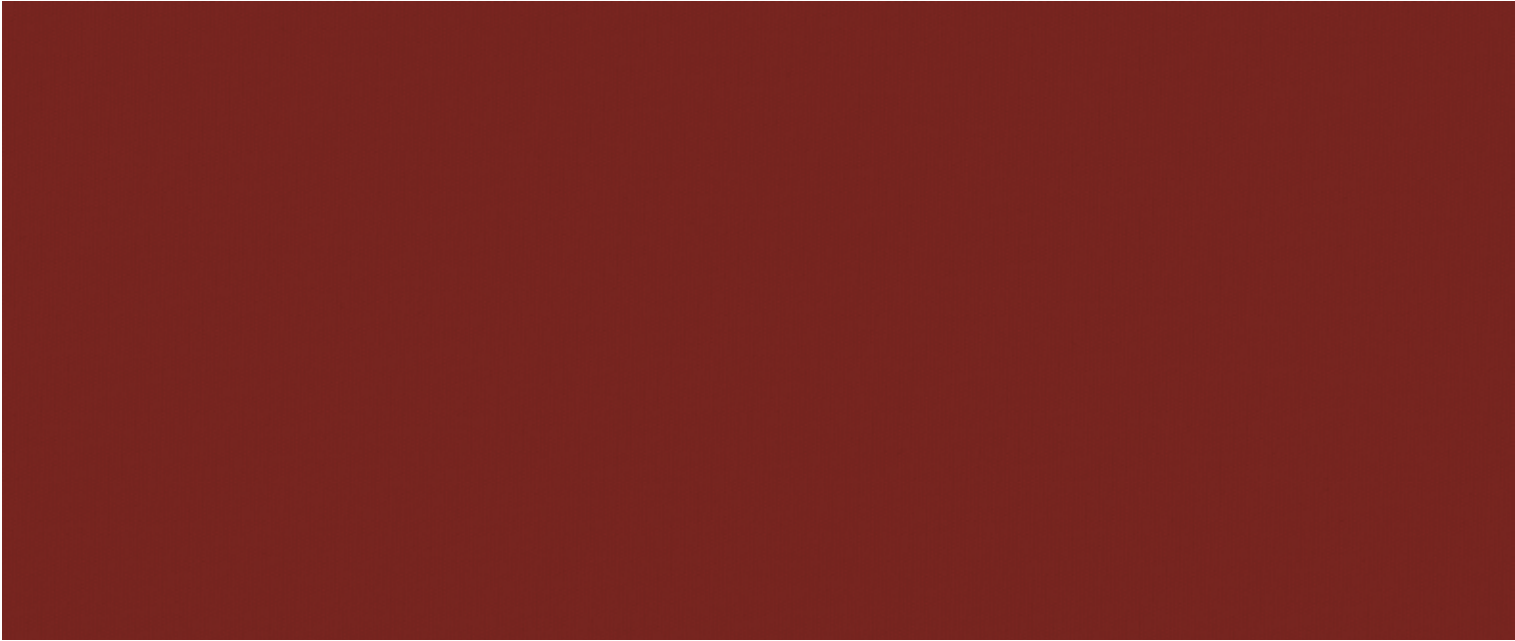
AD HOC¹



57523



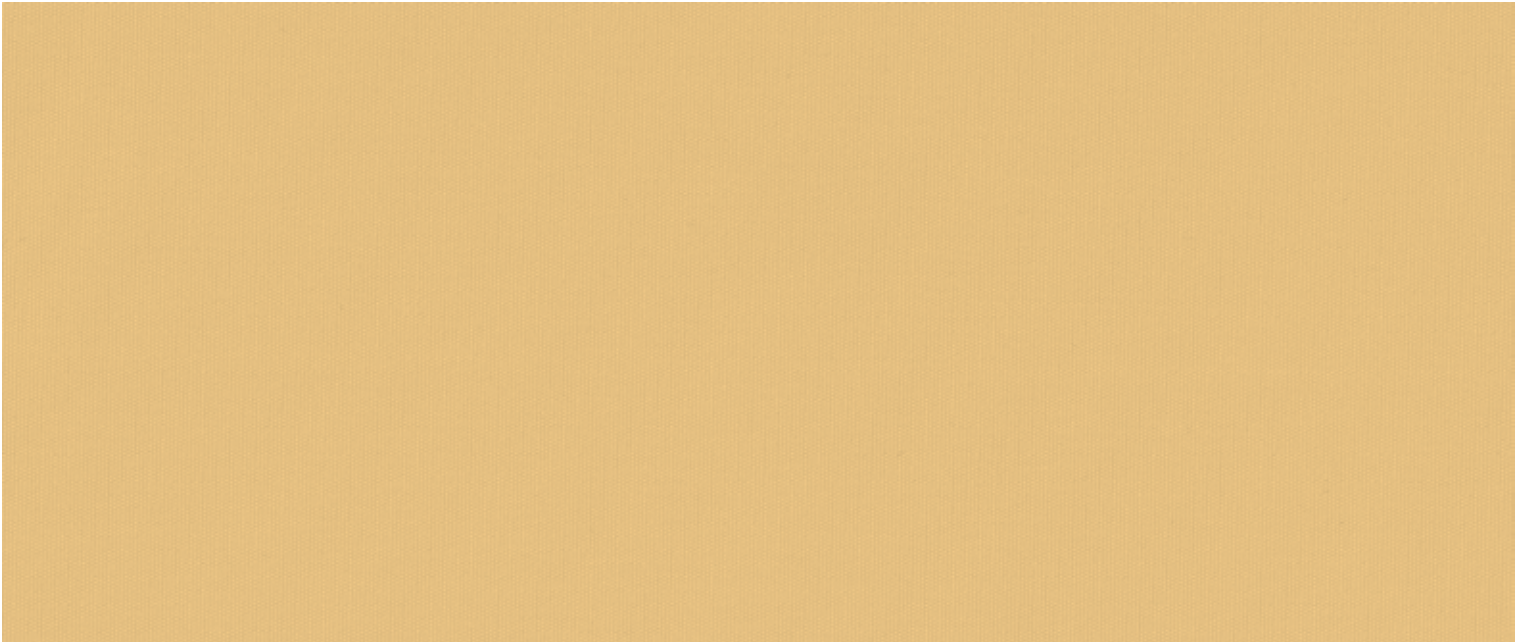
57543



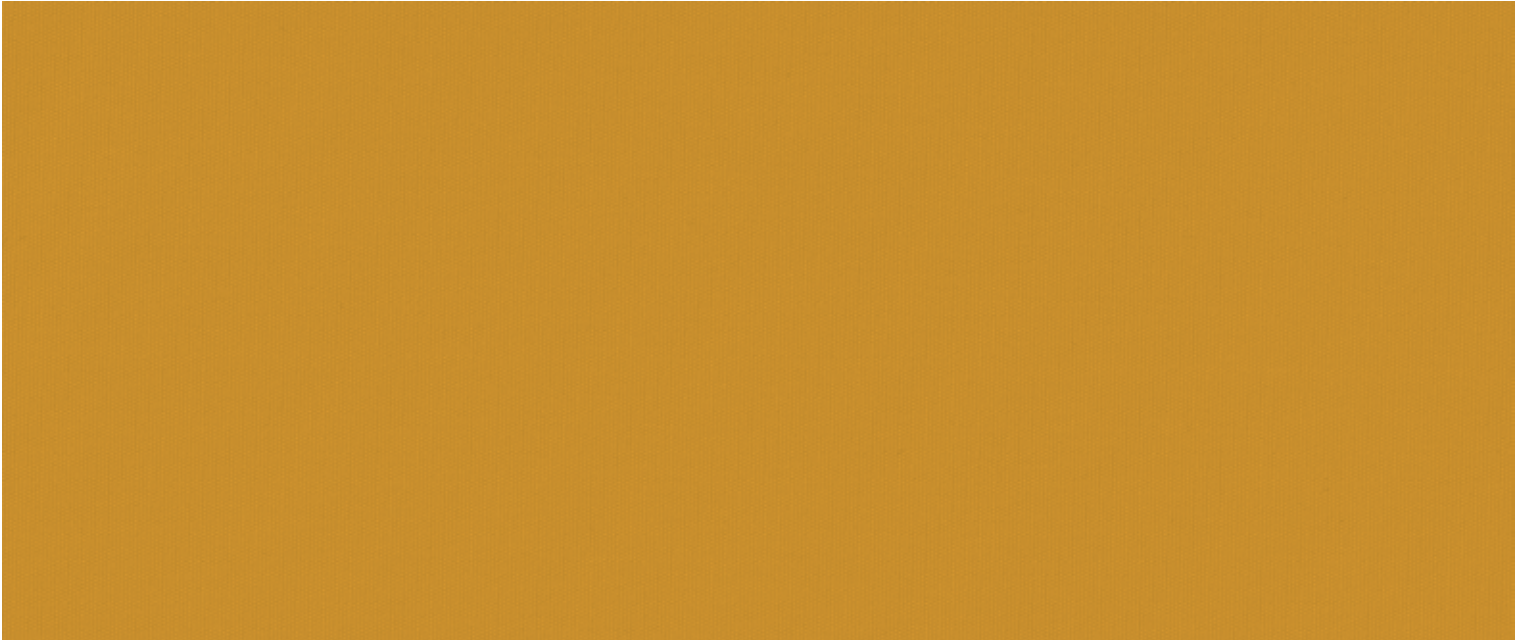
57533



AD HOC¹



57521



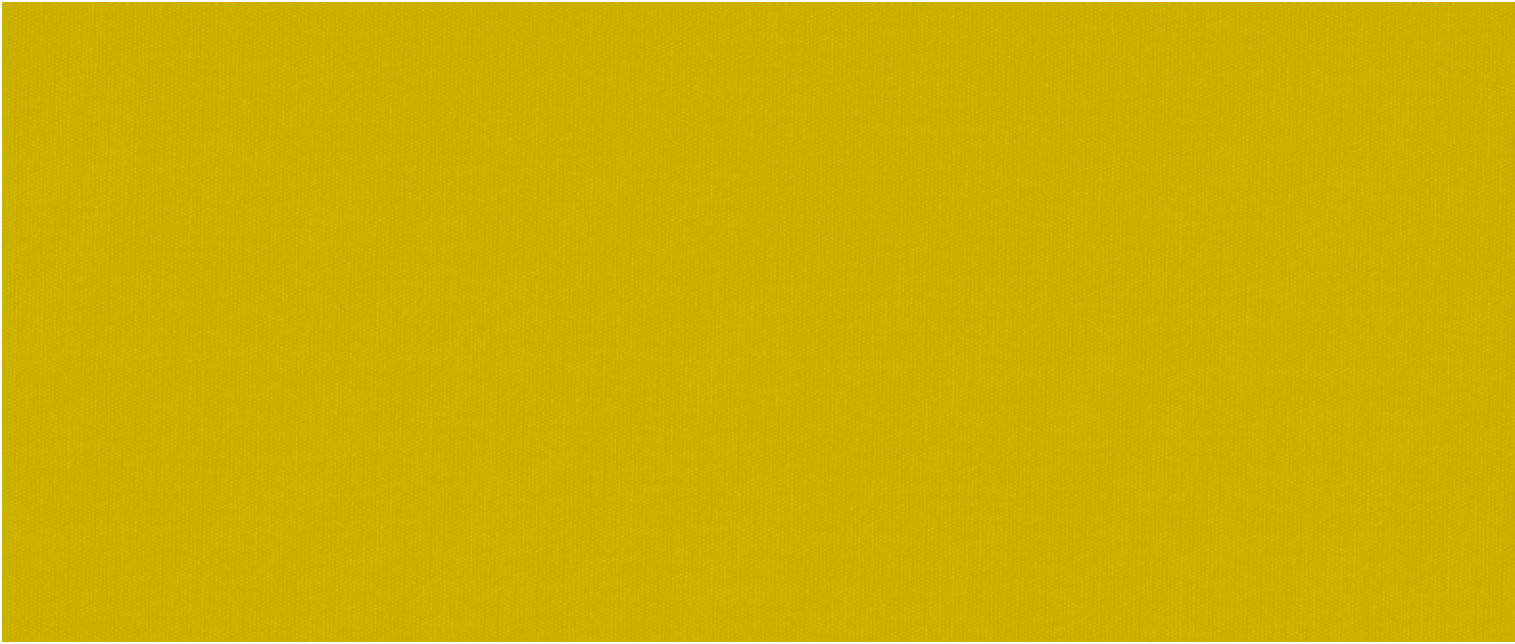
57511



57551



AD HOC¹



57526



57536



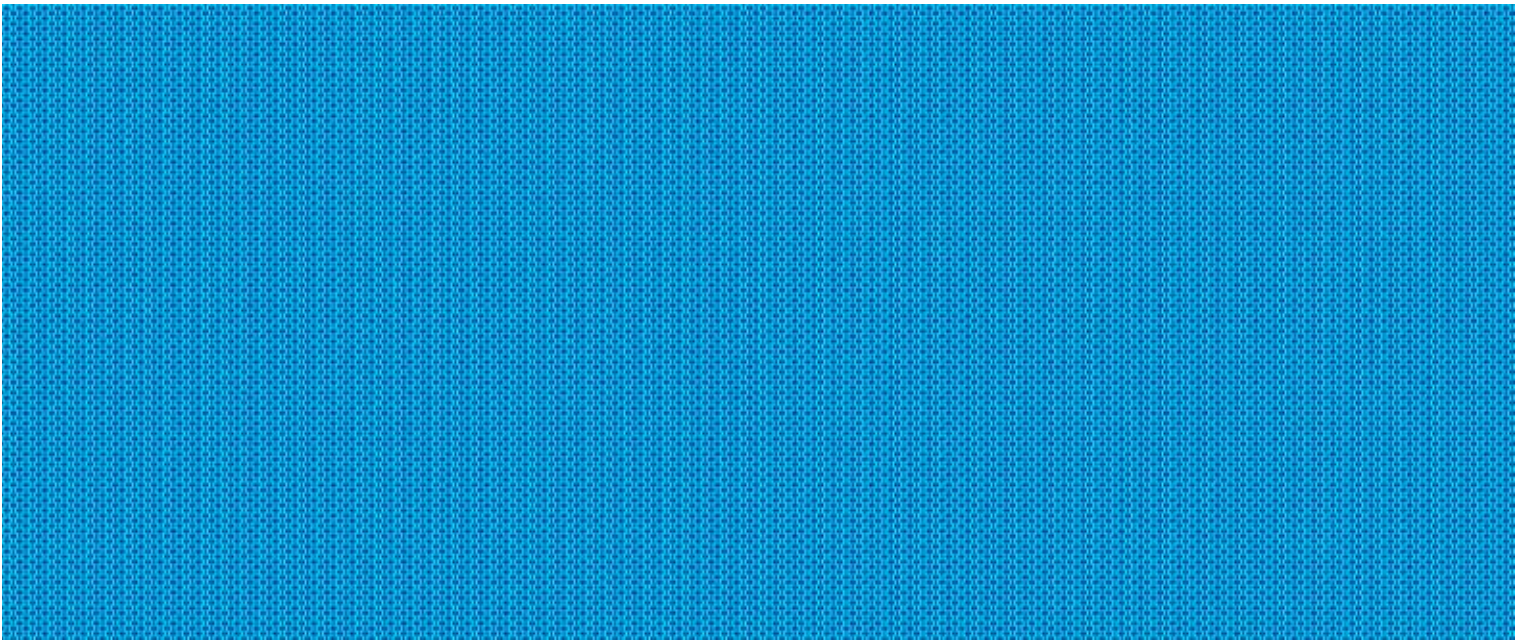
57516



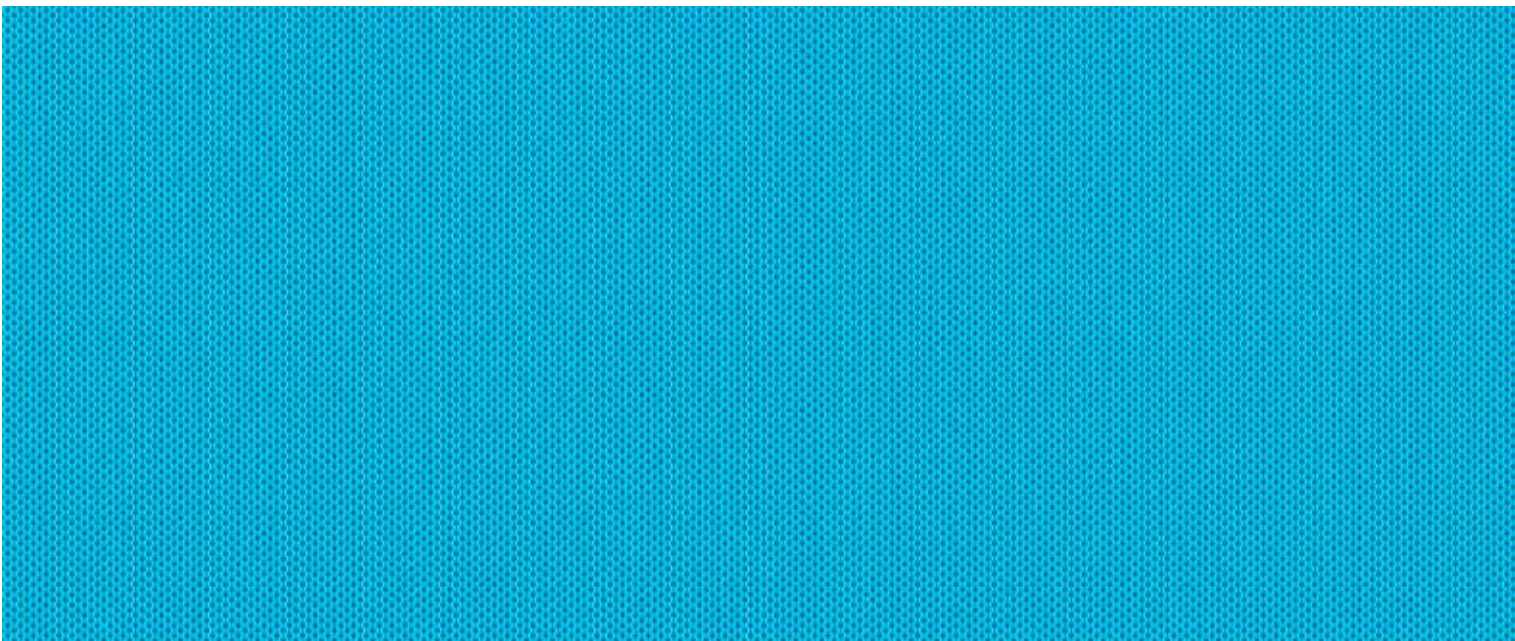
AD HOC¹



57546



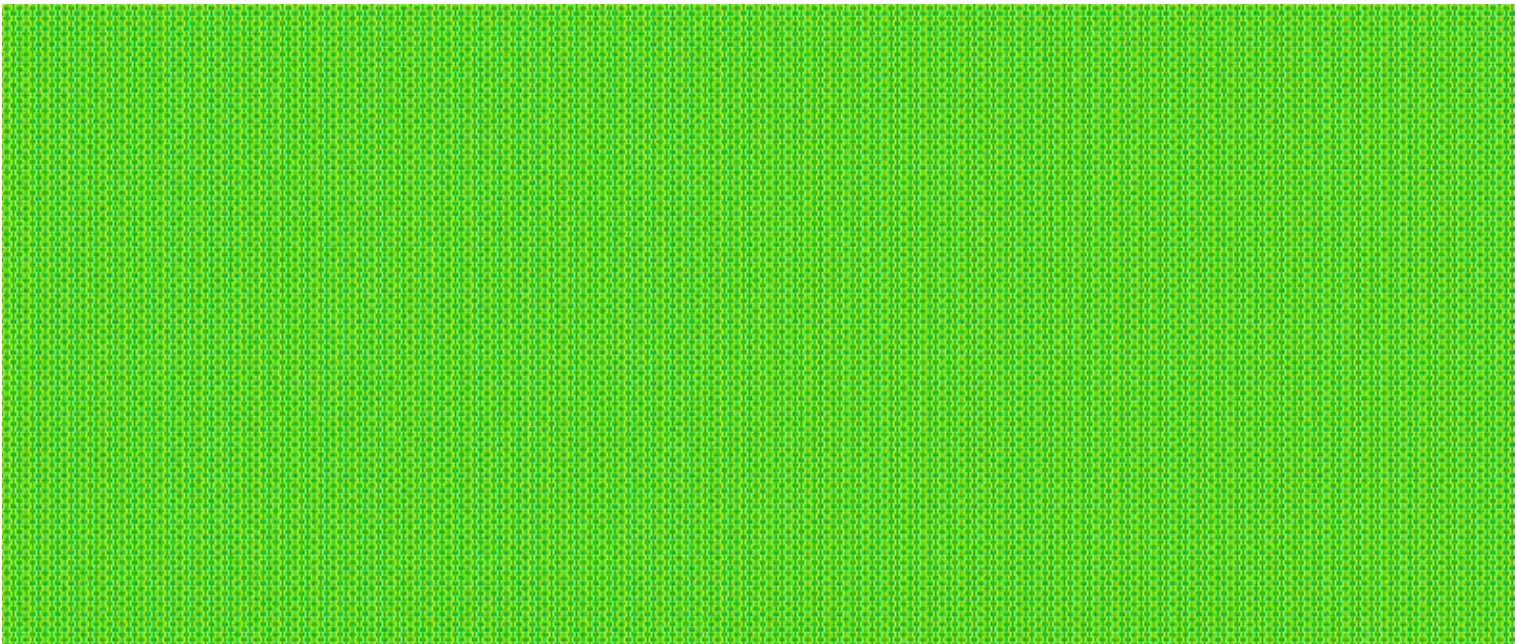
57055



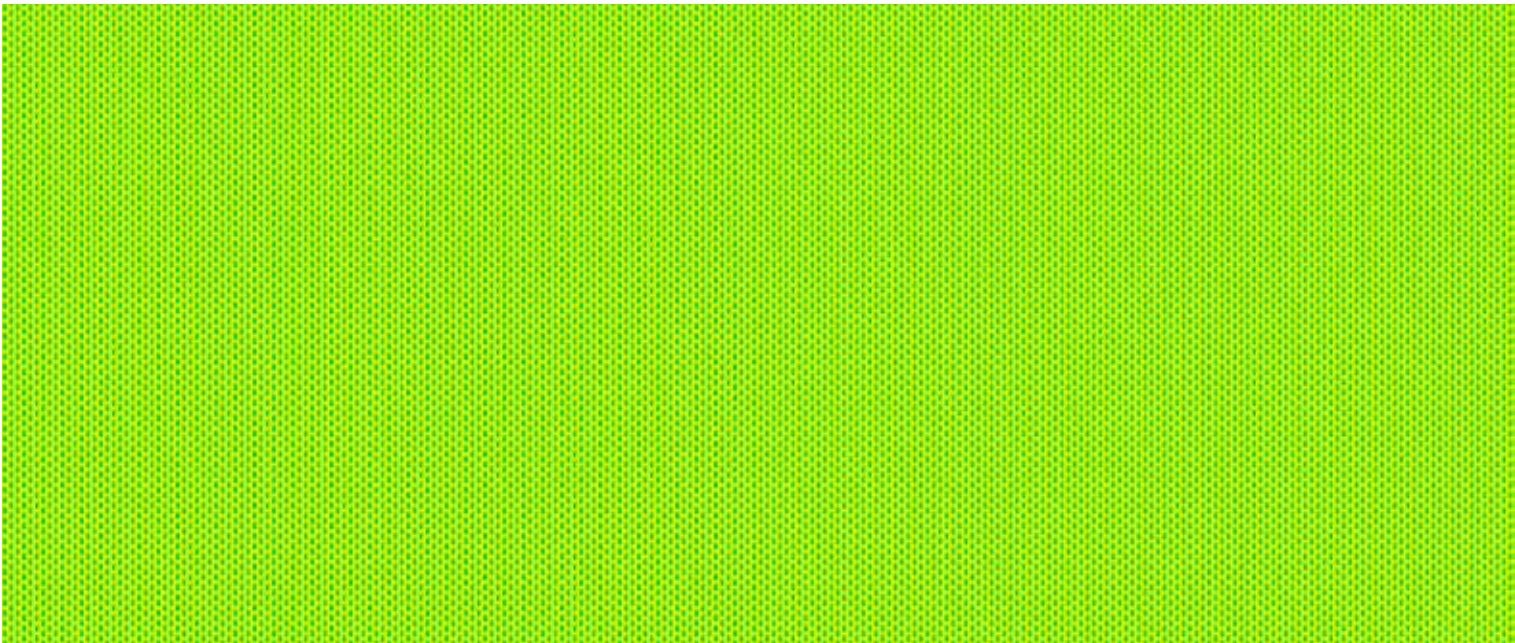
57045



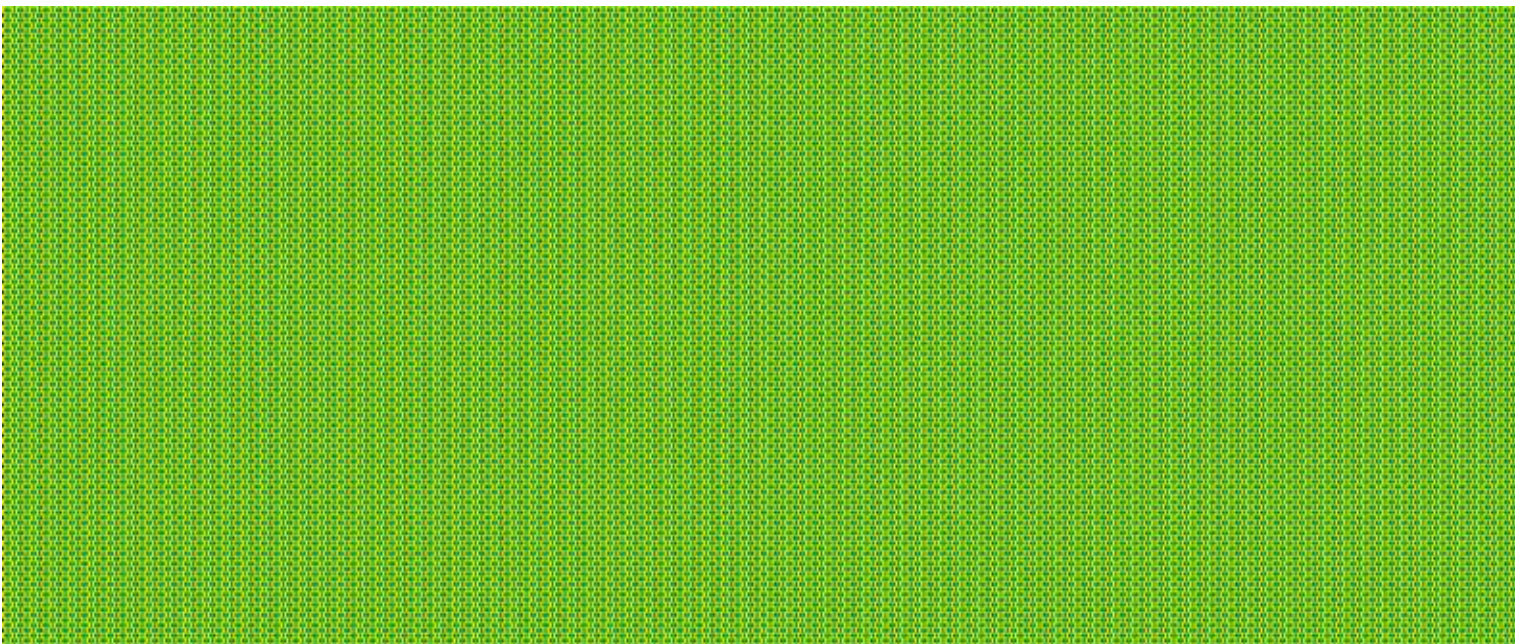
AD HOC¹



57056



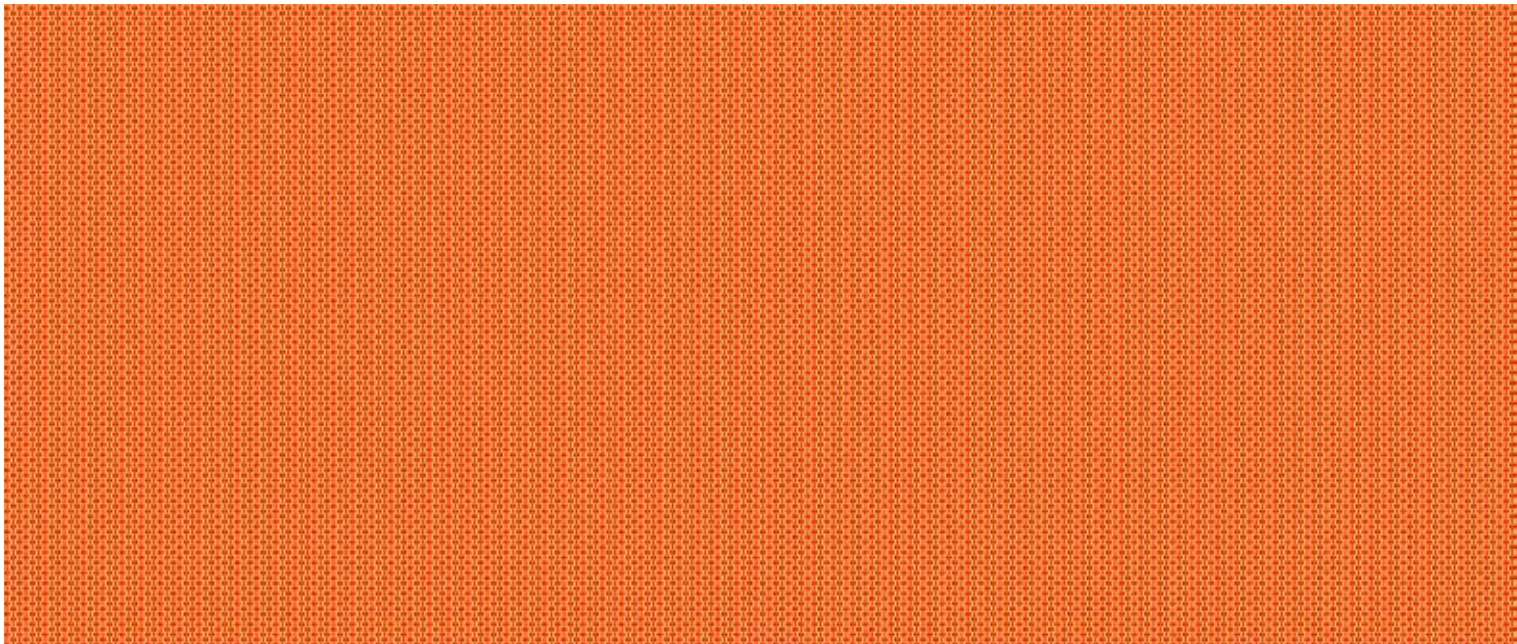
57046



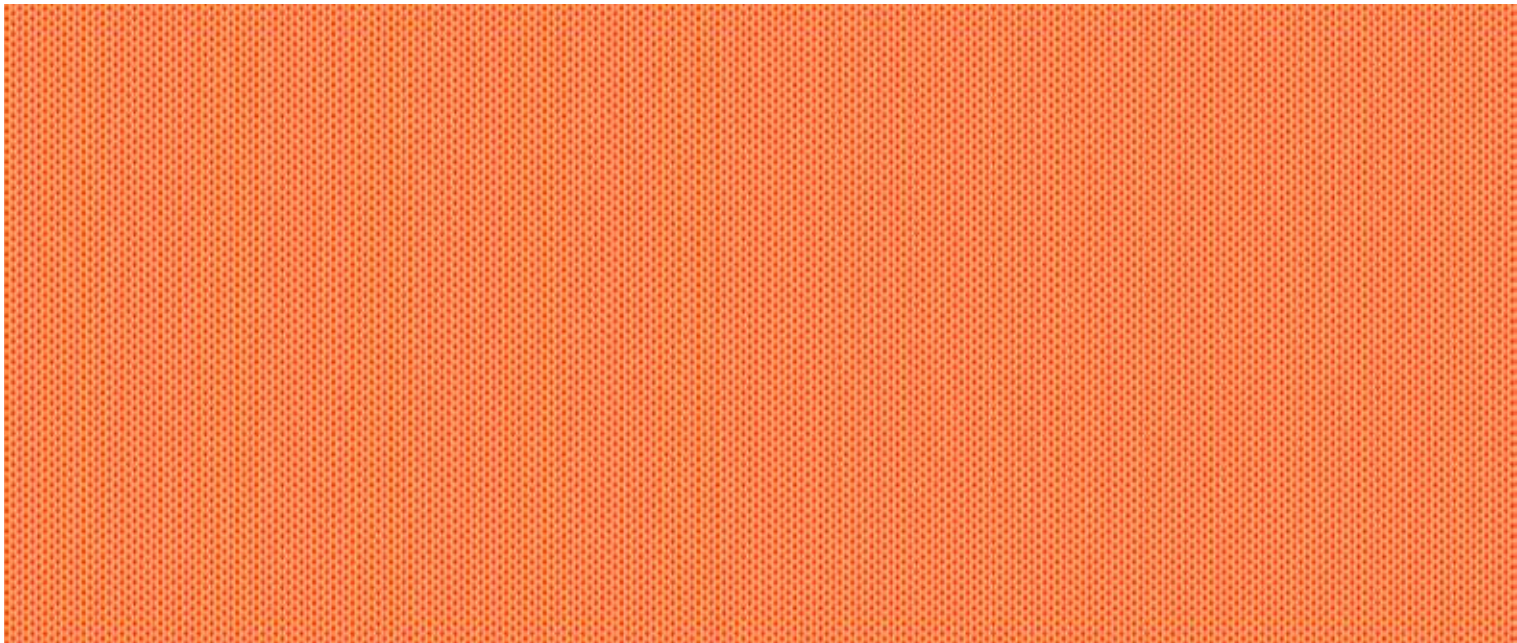
57066



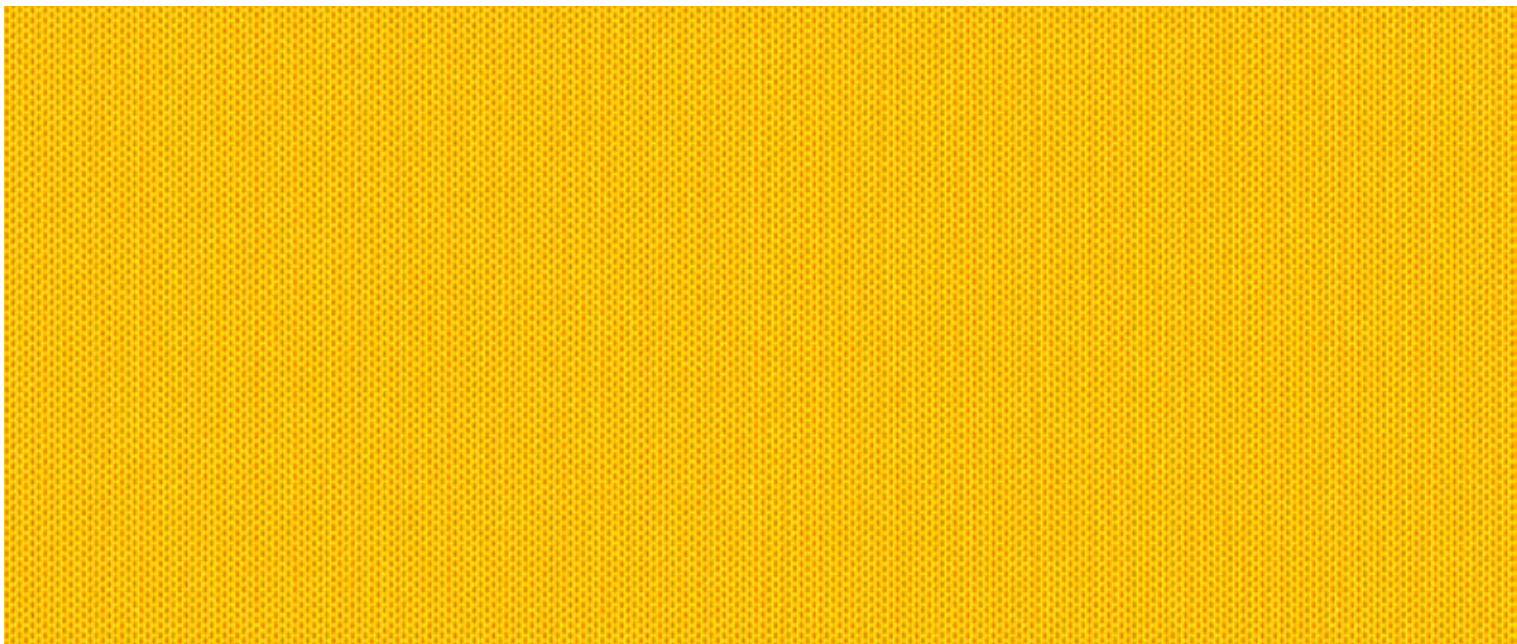
AD HOC¹



57043



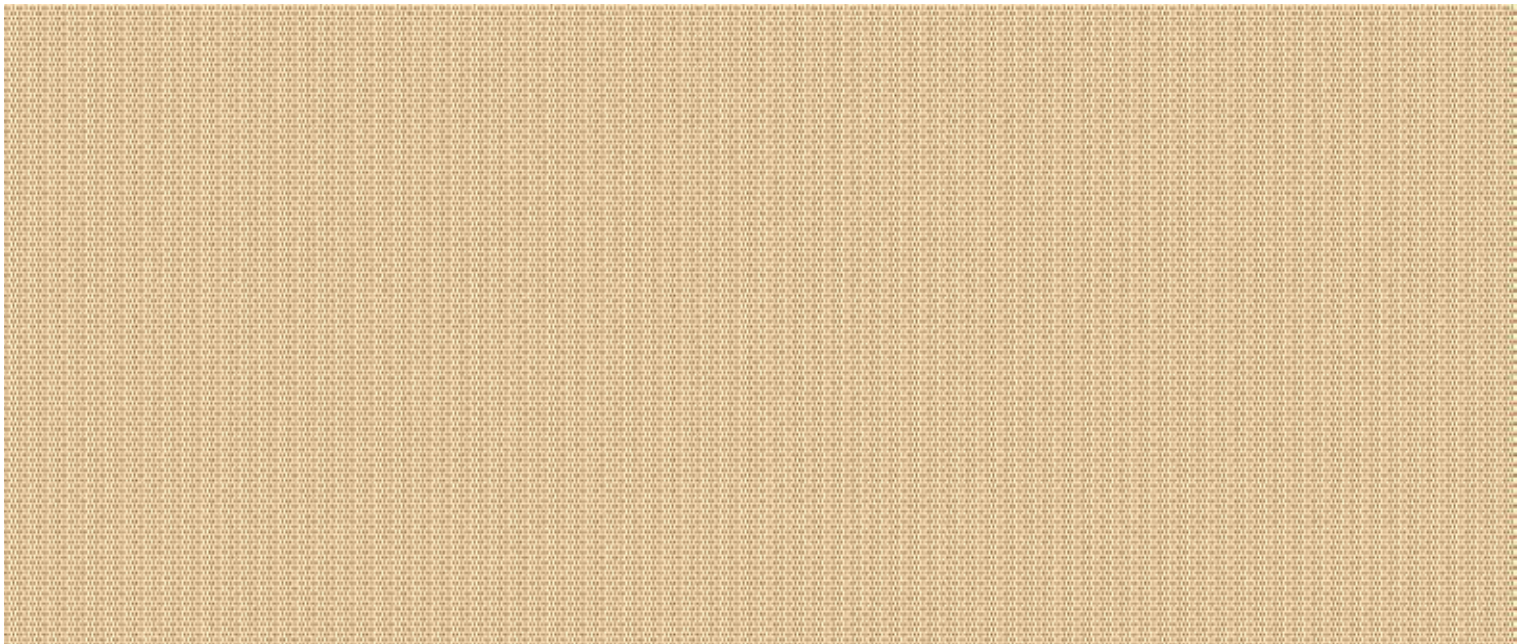
57042



57041



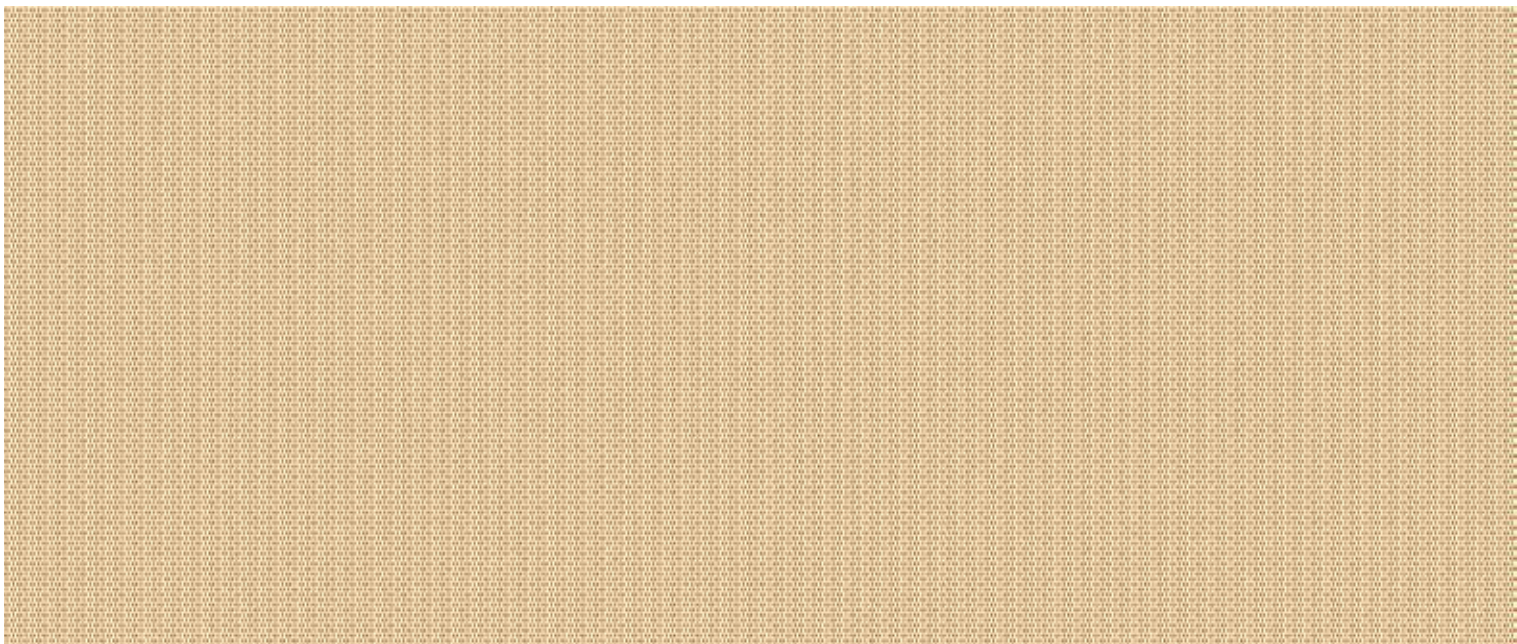
AD HOC¹



57067



57047



57057